

# Chapter 9

## CHASSIS DRAWINGS

---

1. CAB DRAWINGS
2. CAB BACK DRAWINGS
3. CHASSIS DRAWINGS
4. CHASSIS FRAME DRAWINGS
5. FRAME HOLES DRAWING (AROUND REAR SUSPENSION)

### **ABOUT CAD-DATA**

**CAD-DATA is contained on separate attachment file in this CD-ROM.**

**CONTENTS ;**

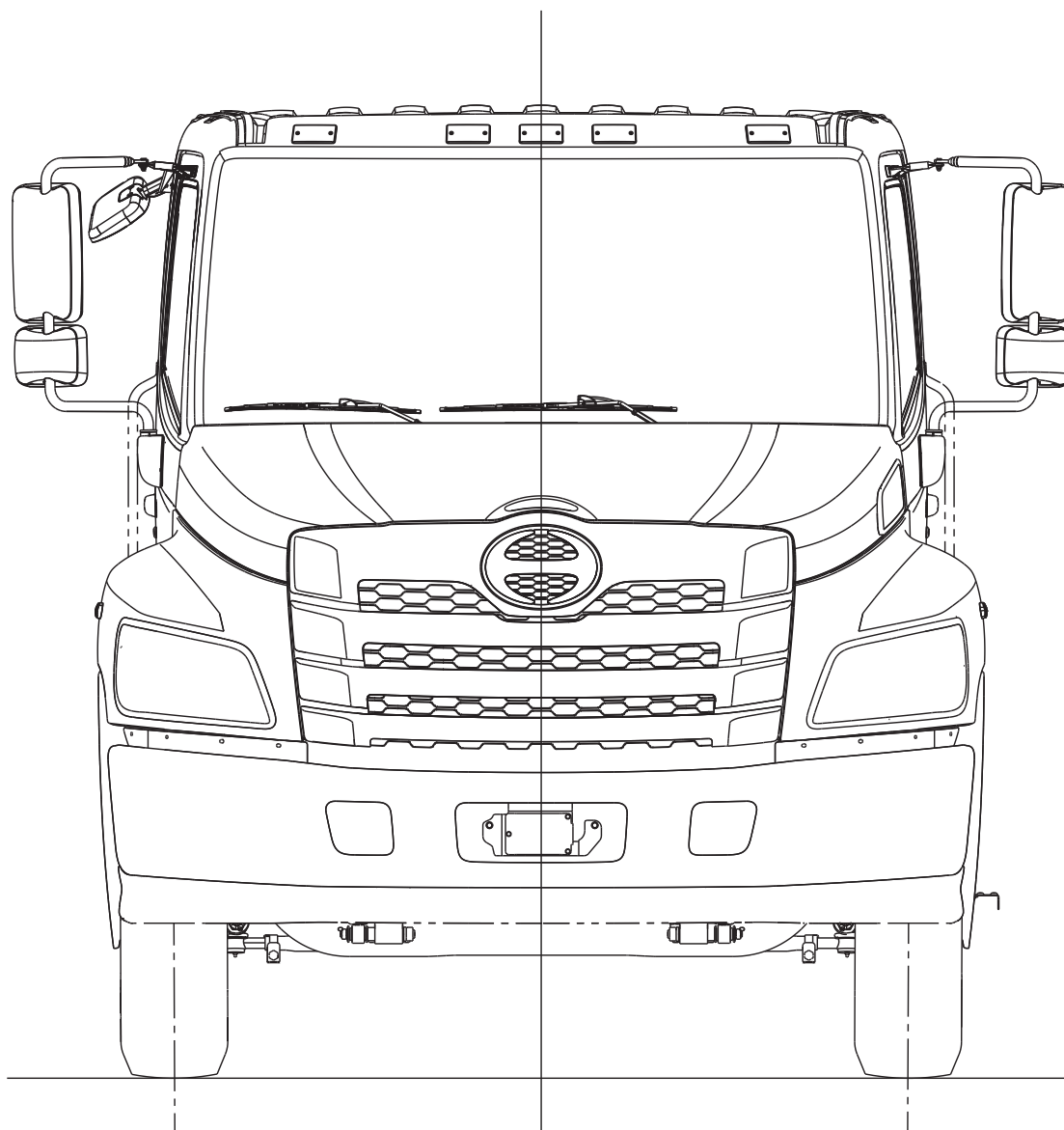
- CAB DRAWING
- CAB BACK DRAWING
- CHASSIS DRAWING

## 1. CAB DRAWINGS

---

**MODEL : NEC1(L6) AND NFC1(L7)**

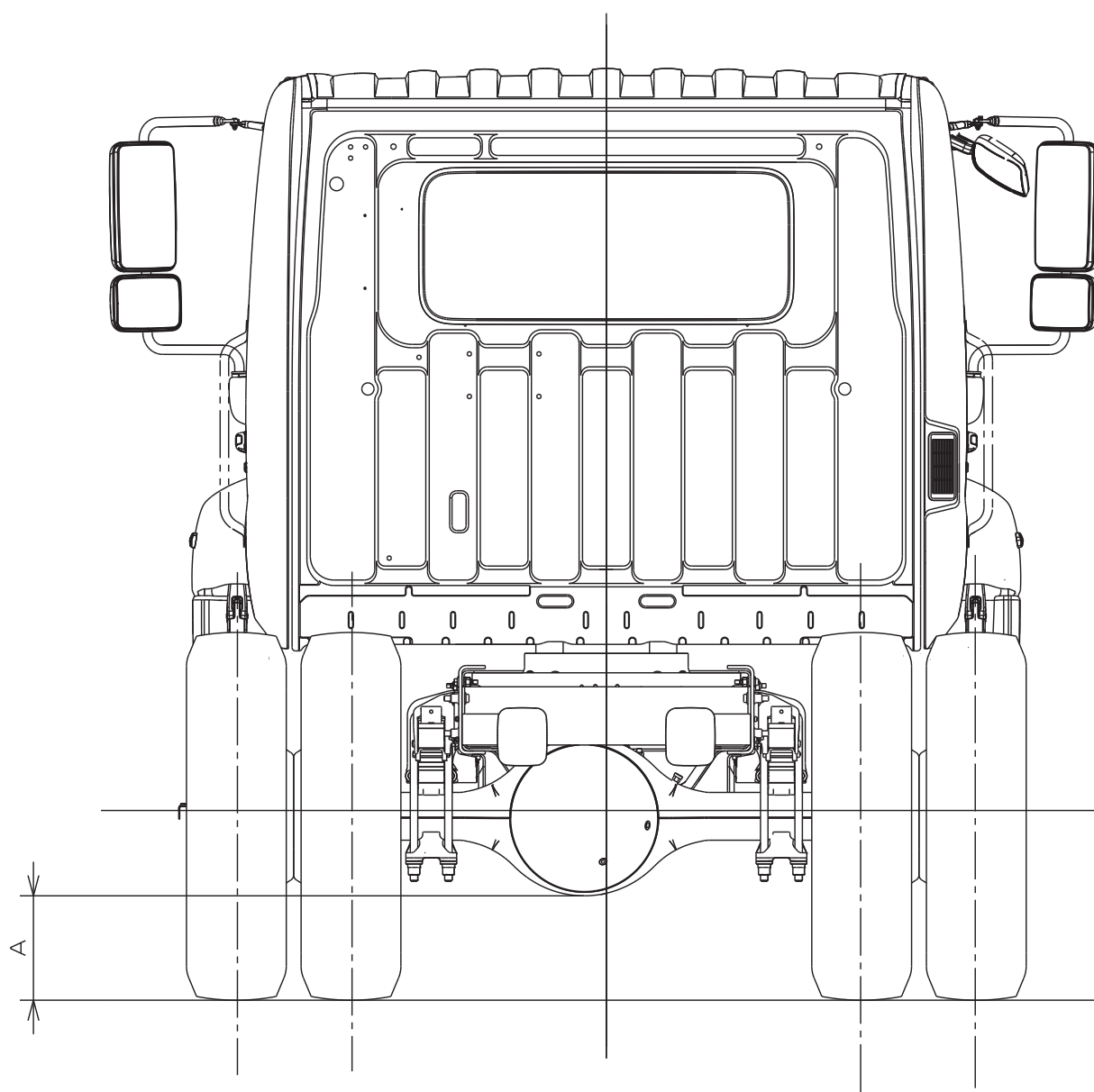
• FRONT SIDE VIEW



## • REAR SIDE VIEW

Unit : mm (in.)

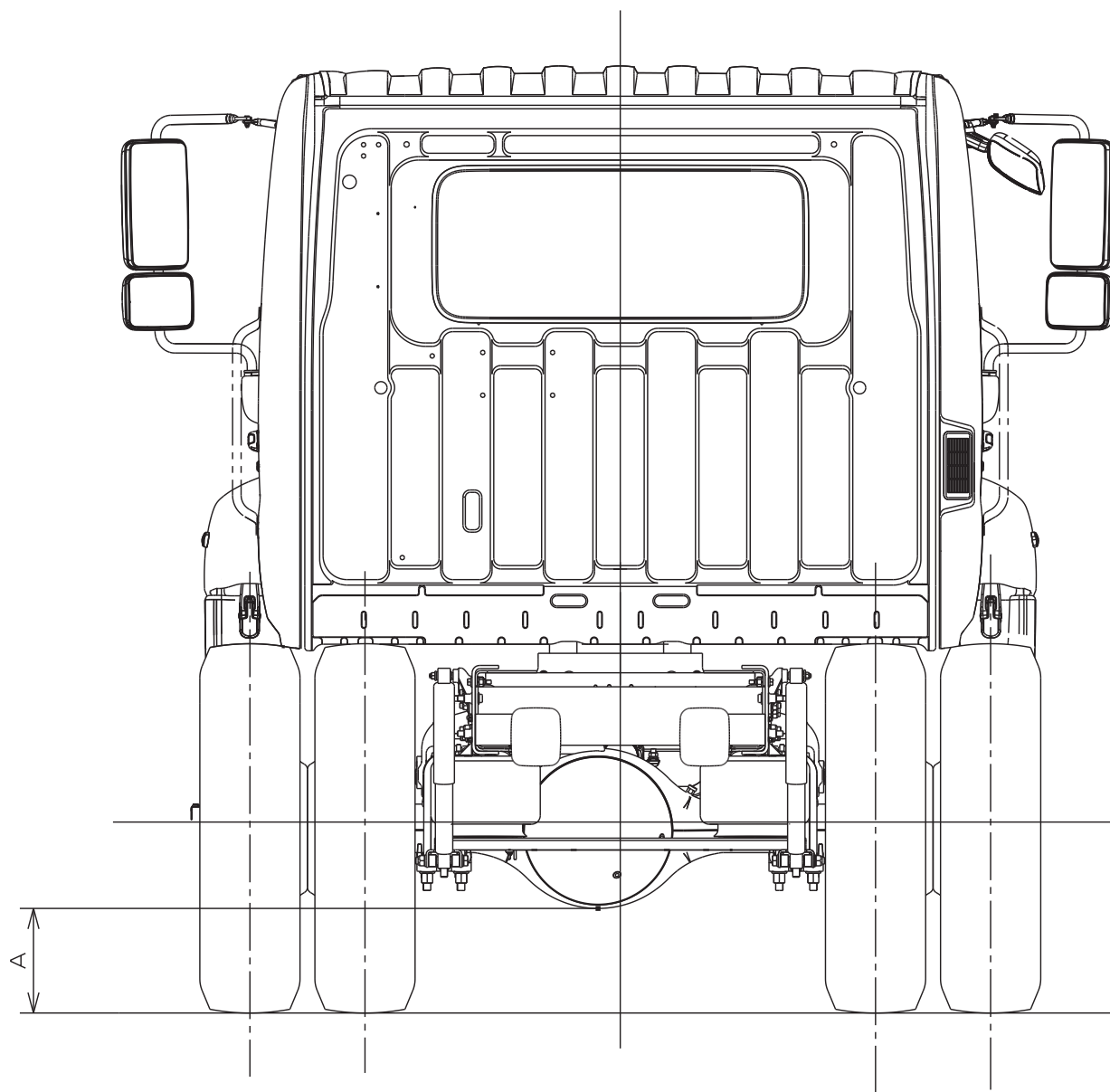
MODEL	TIRE	A
NE (L6)	245/70R19.5	180 (7.1)
	11R22.5	285 (11.2)
	255/70R22.5	225 (8.9)
	295/75R22.5	265 (10.4)
NF (L7)	11R22.5	285 (11.2)
	295/75R22.5	265 (10.4)



• REAR SIDE VIEW  
(REAR AIR SUSPENSION)

Unit : mm (in.)

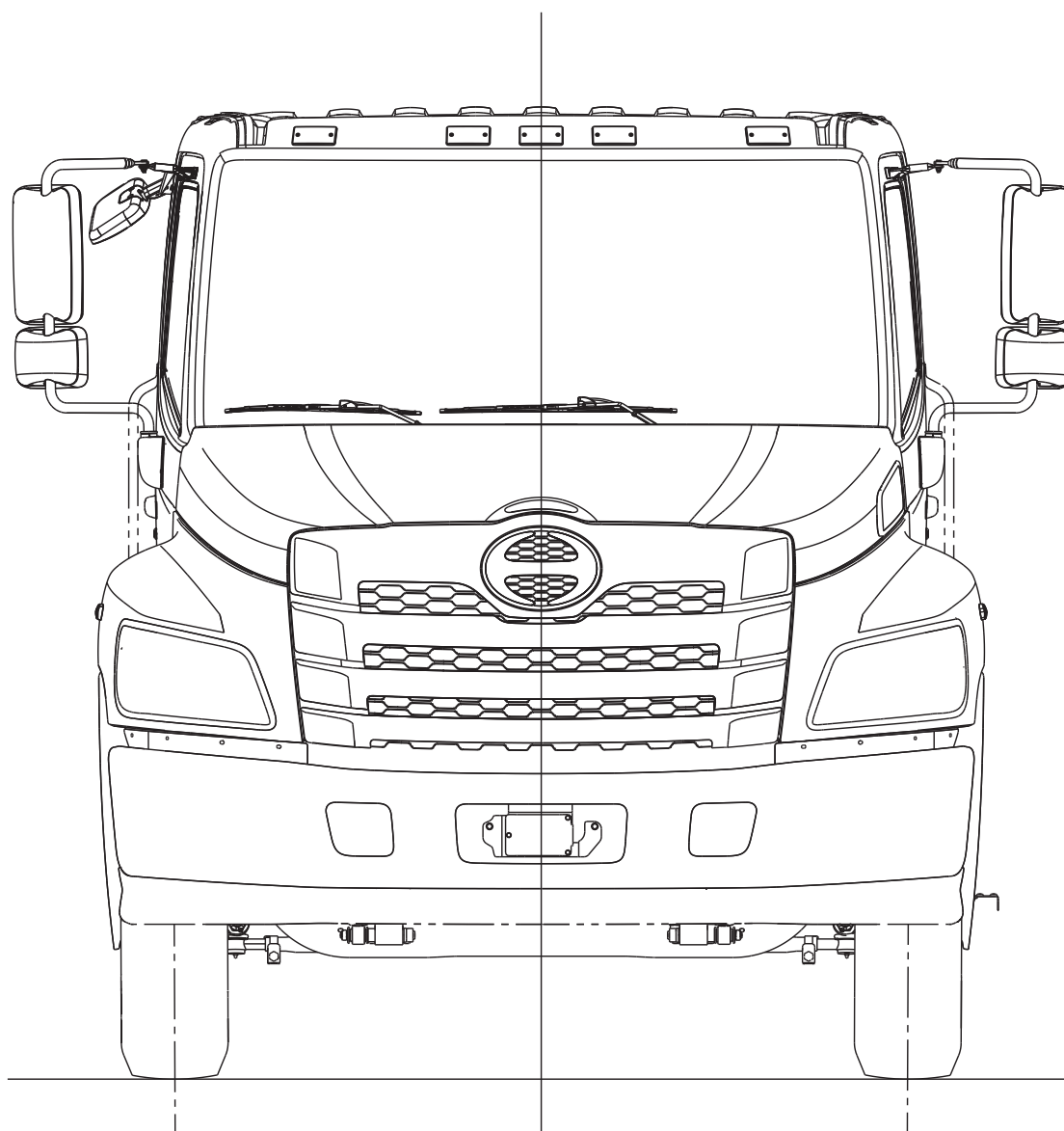
MODEL	TIRE	A
NE (L6)	245/70R19.5	180 (7.1)
	11R22.5	285 (11.2)
	255/70R22.5	225 (8.9)
	295/75R22.5	265 (10.4)
NF (L7)	11R22.5	285 (11.2)
	295/75R22.5	265 (10.4)





**MODEL : NJC1(L6), NVC1(L7) AND NHC1(L8)**

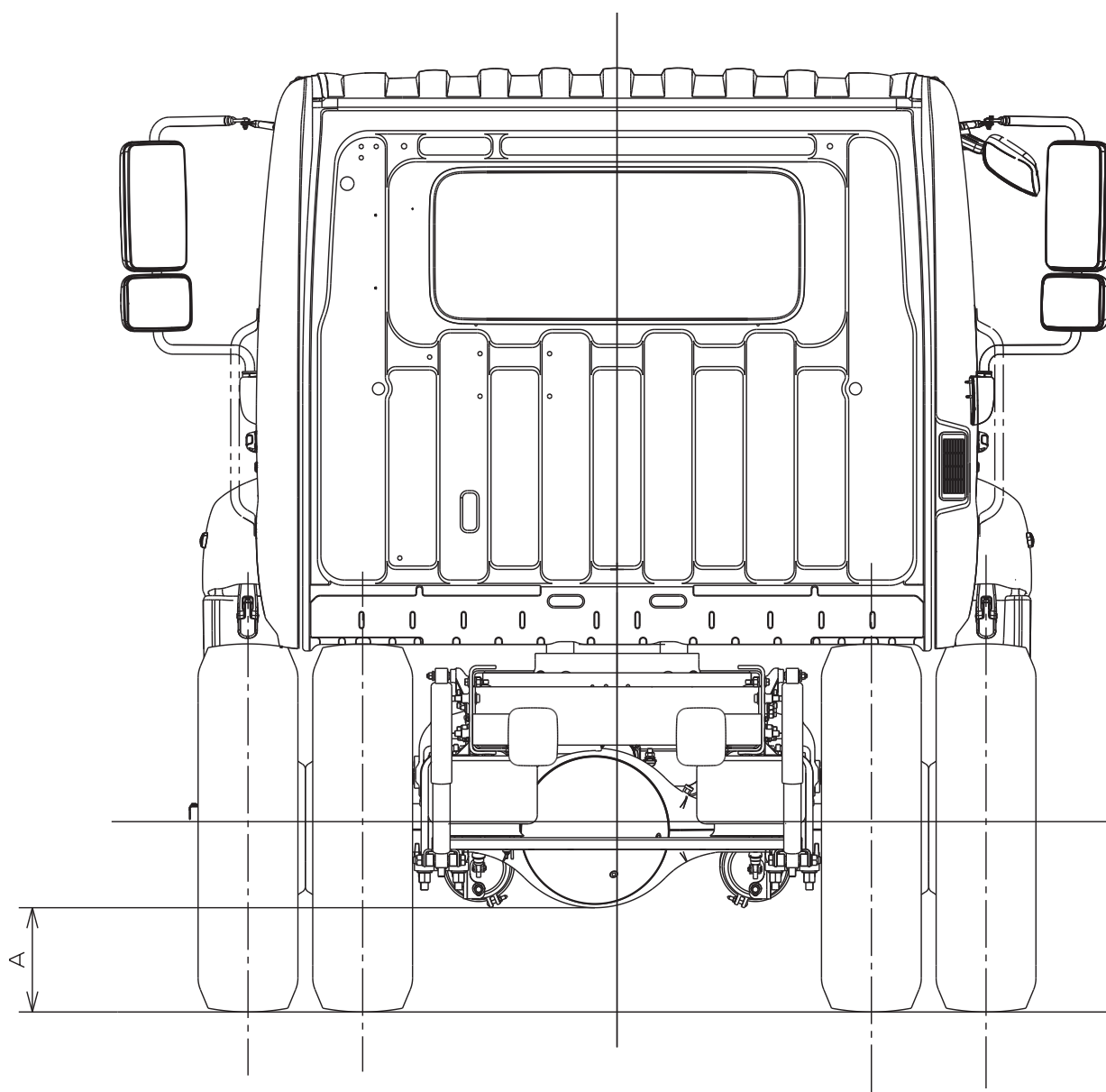
• FRONT SIDE VIEW



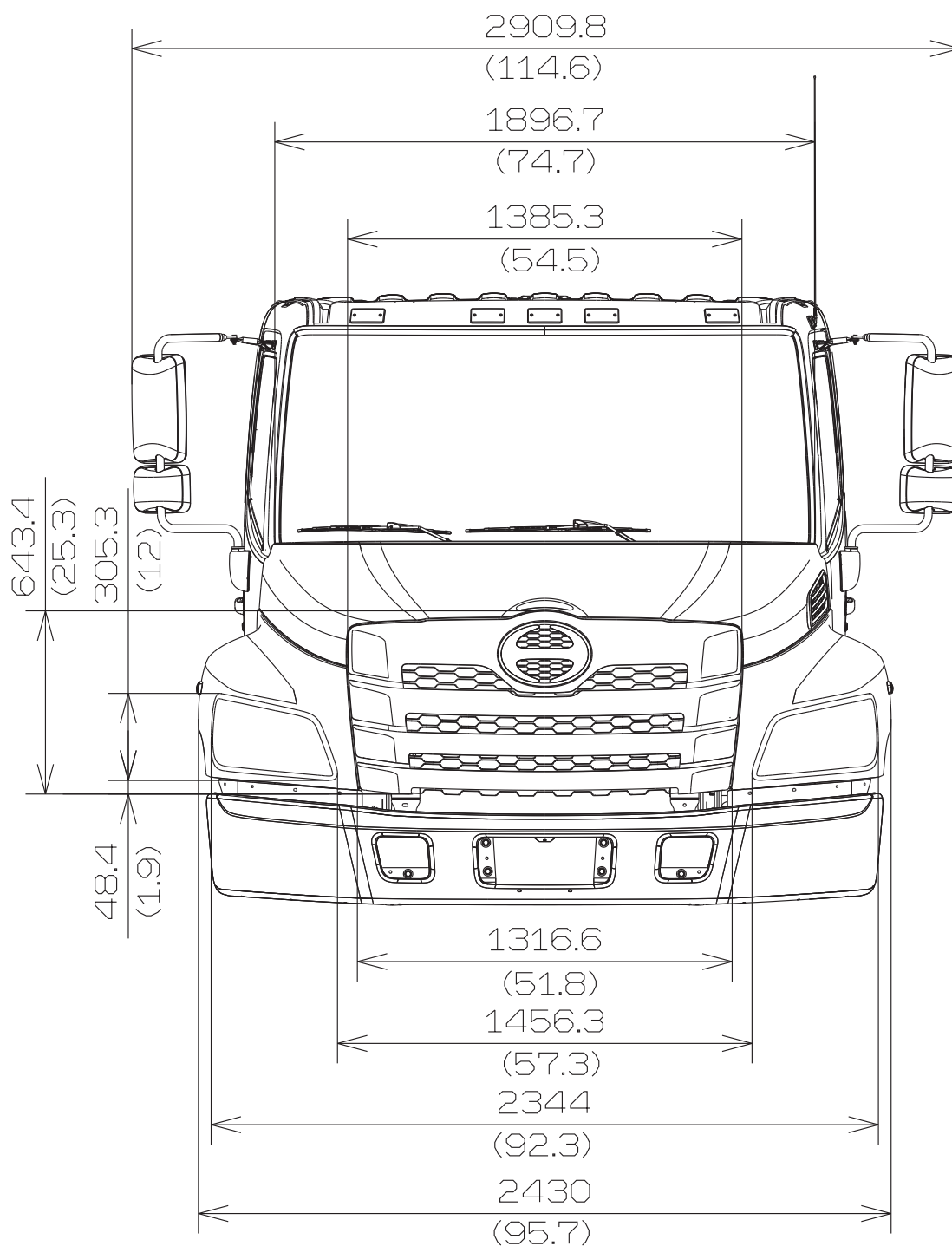
• REAR SIDE VIEW  
(REAR AIR SUSPENSION)

Unit : mm (in.)

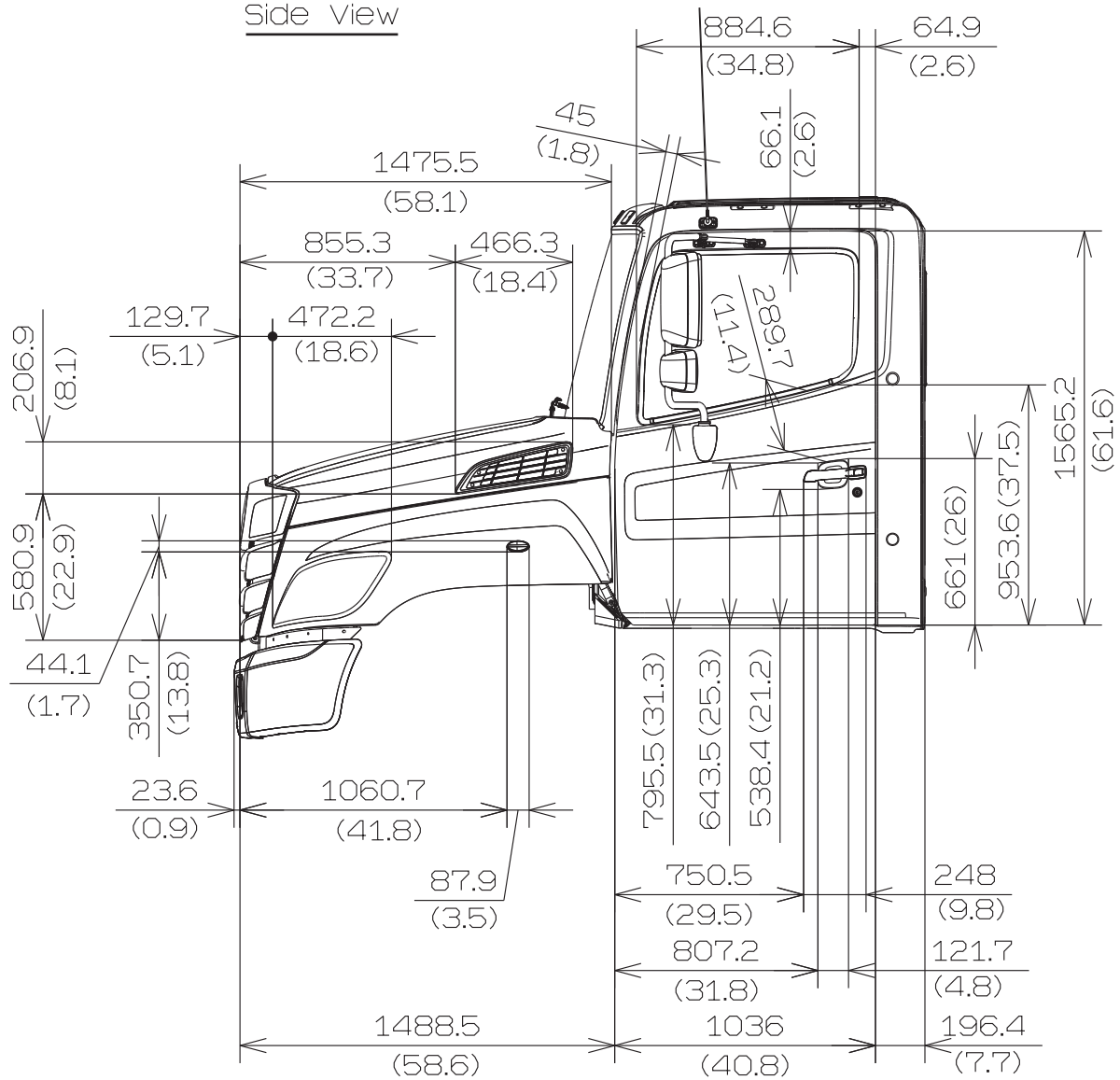
MODEL	RR AXLE	TIRE	A
NJ(L6)	MS-19	11R22.5	285(11.2)
		255/70R22.5	225(8.9)
		295/75R22.5	265(10.4)
NV(L7)	MS-21	11R22.5	285(11.2)
		295/75R22.5	265(10.4)
	RS-23 RS-25	11R22.5	255(10.0)
NH(L8)	RS-23	11R22.5	255(10.0)
	RS-25	295/75R22.5	235(9.3)



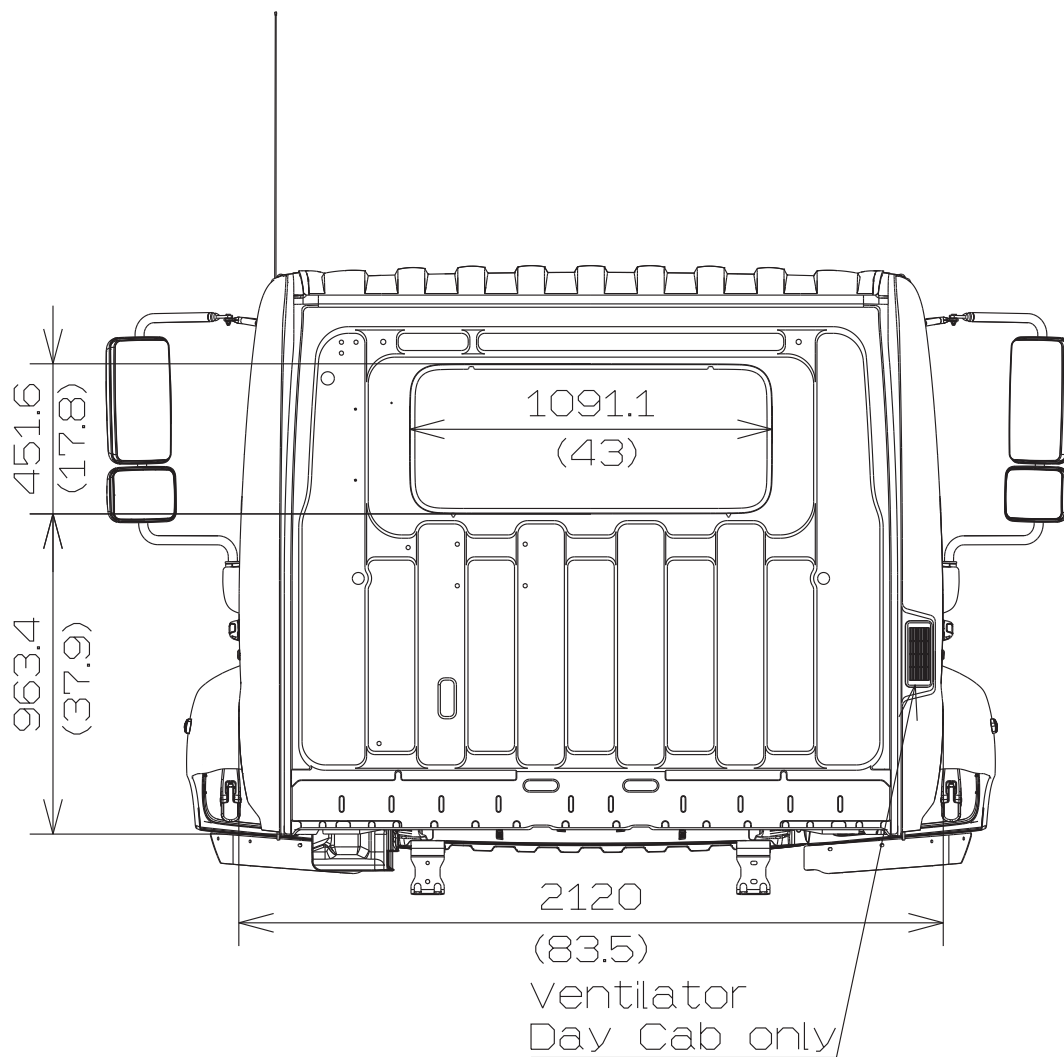
L-Series  
Day Cab  
Front View



L-Series  
Day Cab  
Side View



L-Series  
Day Cab  
Rear View

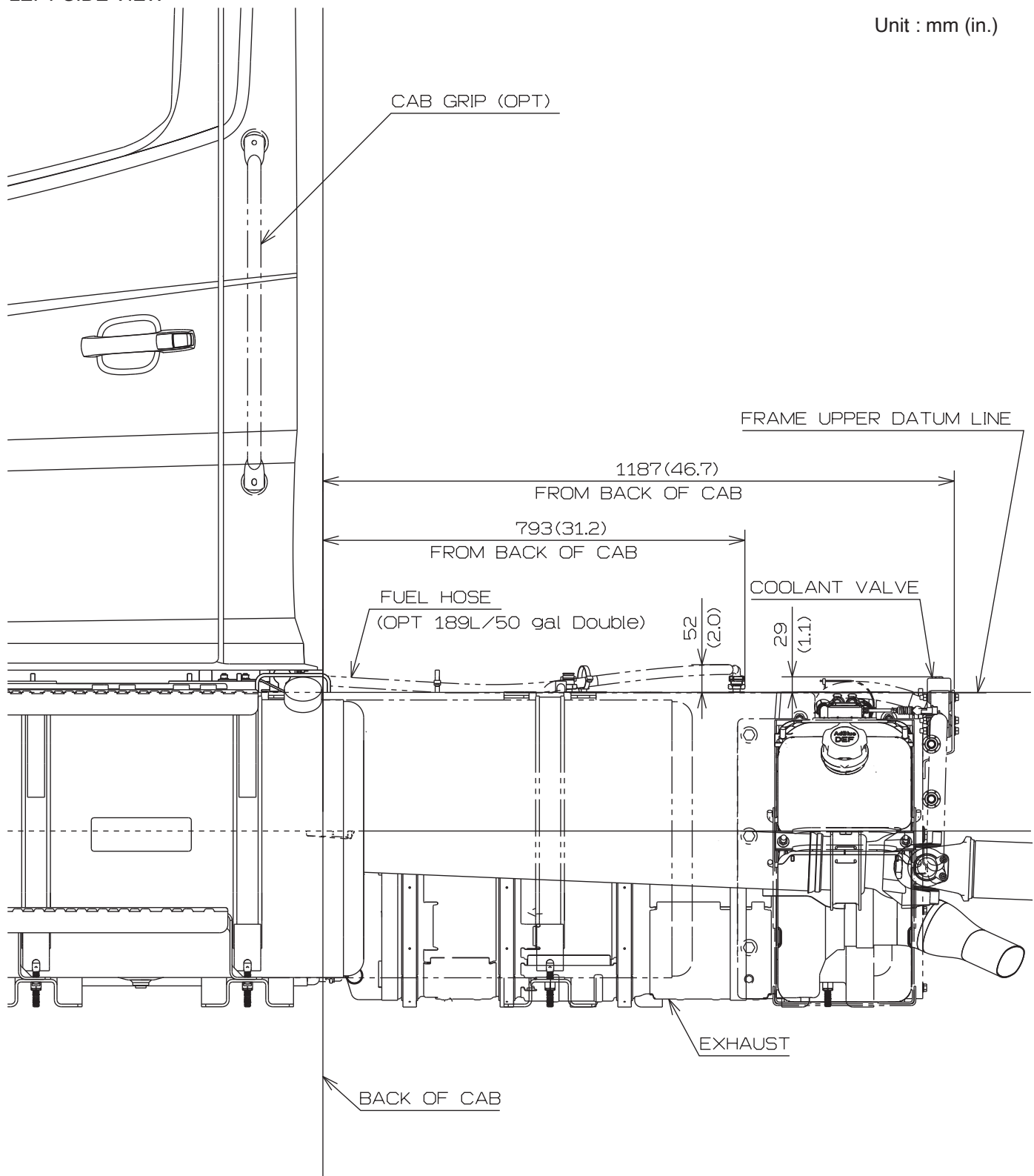


## 2. CAB BACK DRAWINGS

### CHASSIS MODEL : NEC1(L6) AND NFC1(L7) < Day Cab >

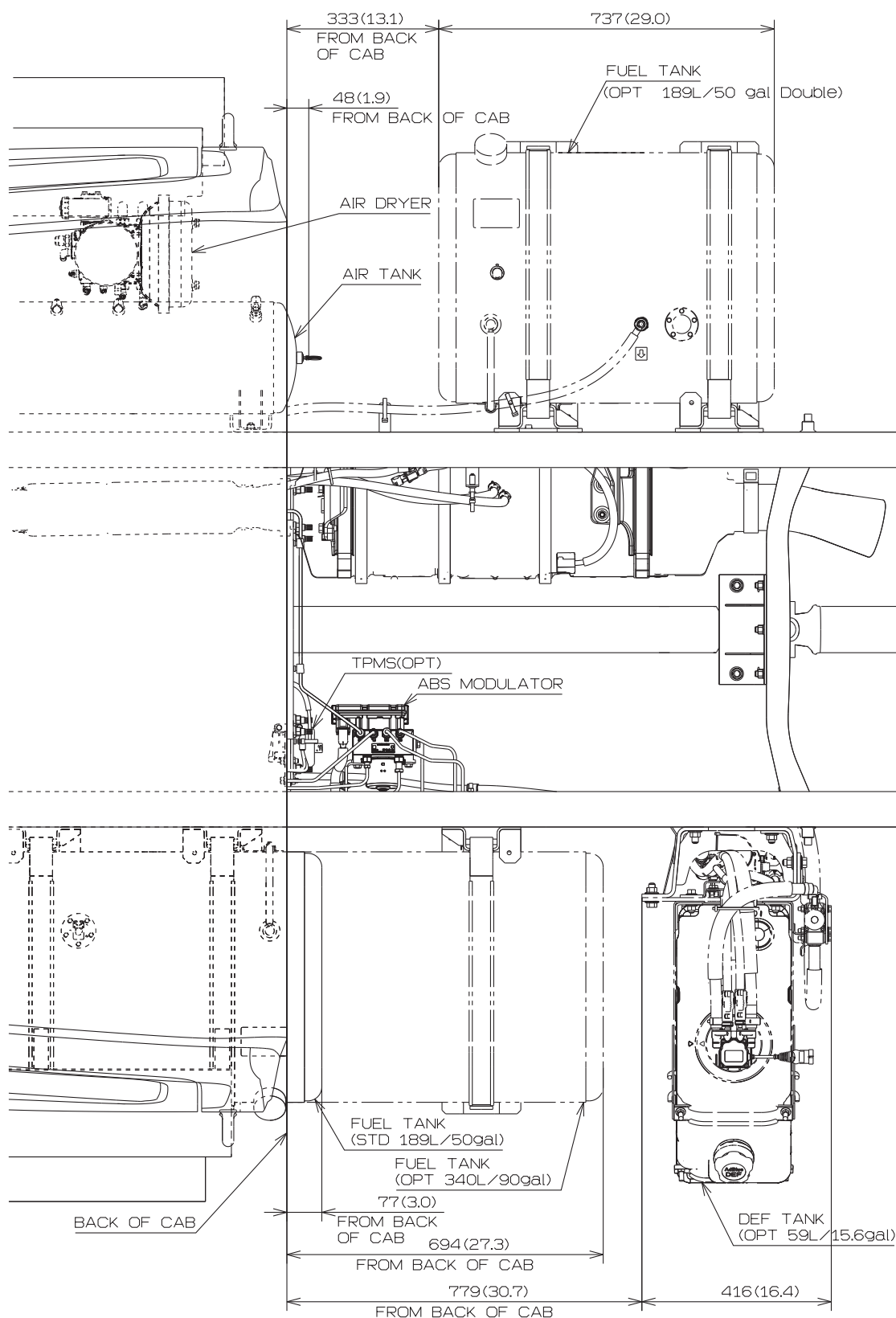
#### • LEFT SIDE VIEW

Unit : mm (in.)



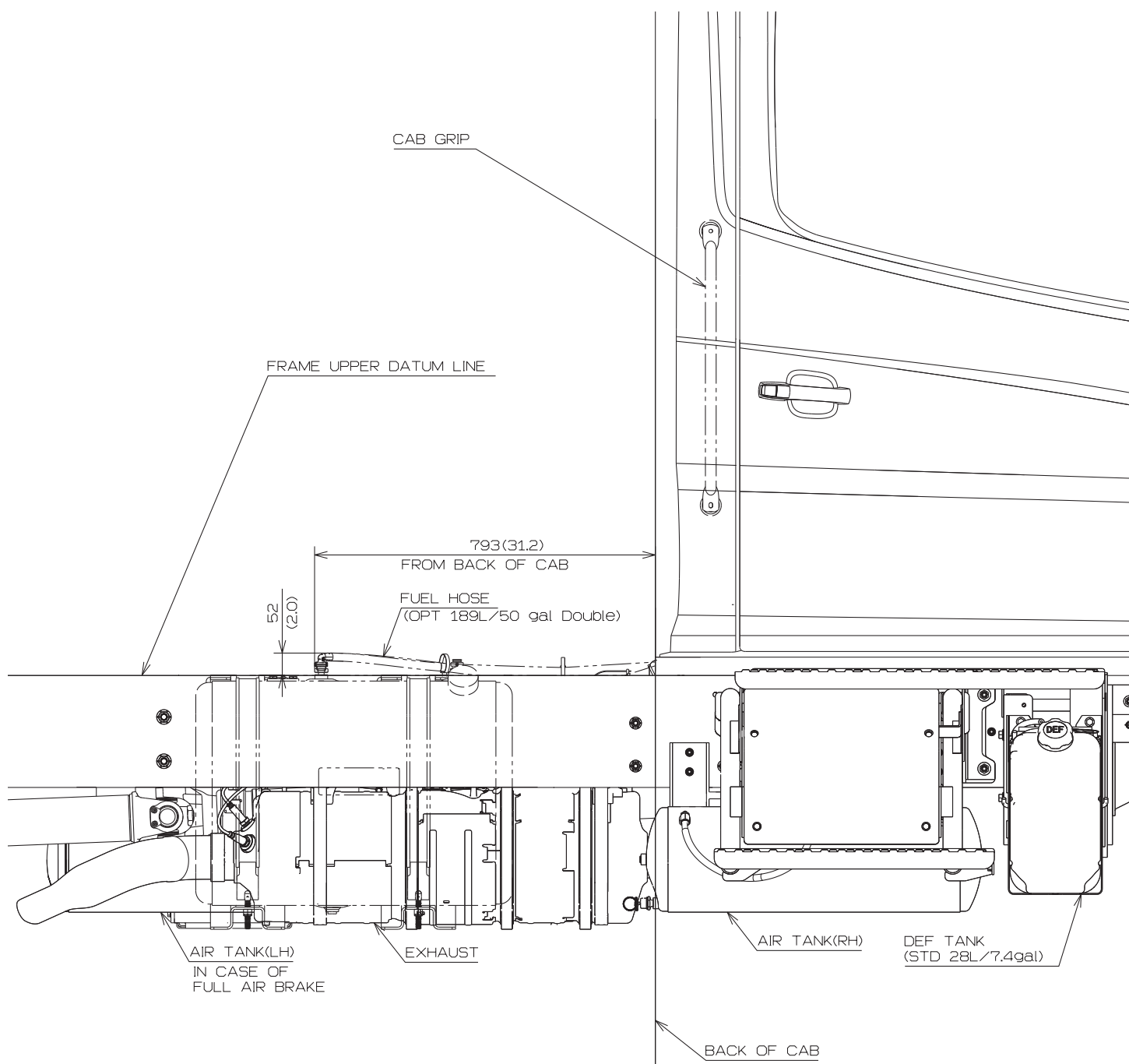
## • UPPER SIDE VIEW

Unit : mm (in.)



• RIGHT SIDE VIEW  
(HORIZONTAL TAIL)

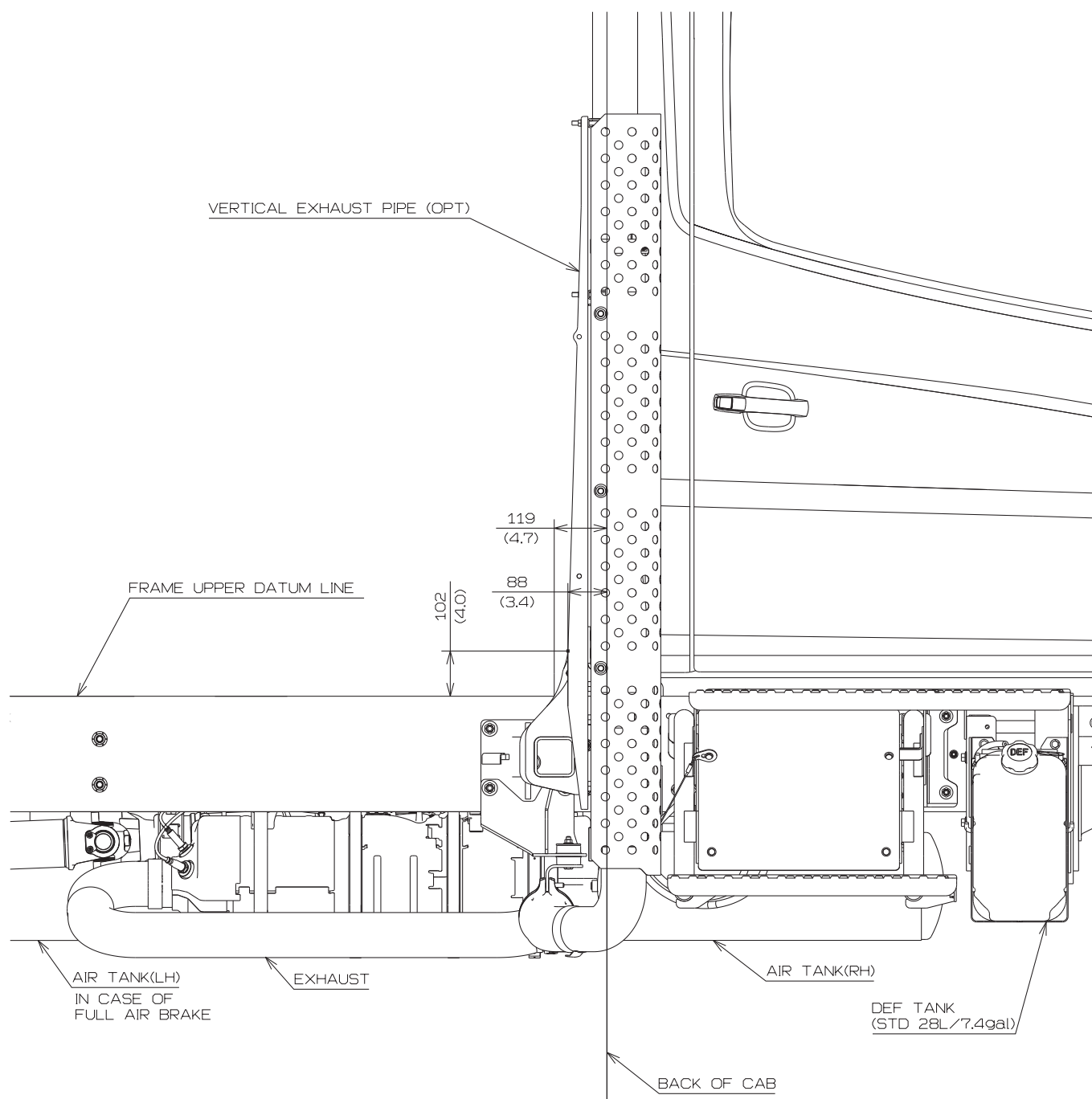
Unit : mm (in.)





- RIGHT SIDE VIEW  
(VERTICAL TAIL)  
< Day Cab ONLY >

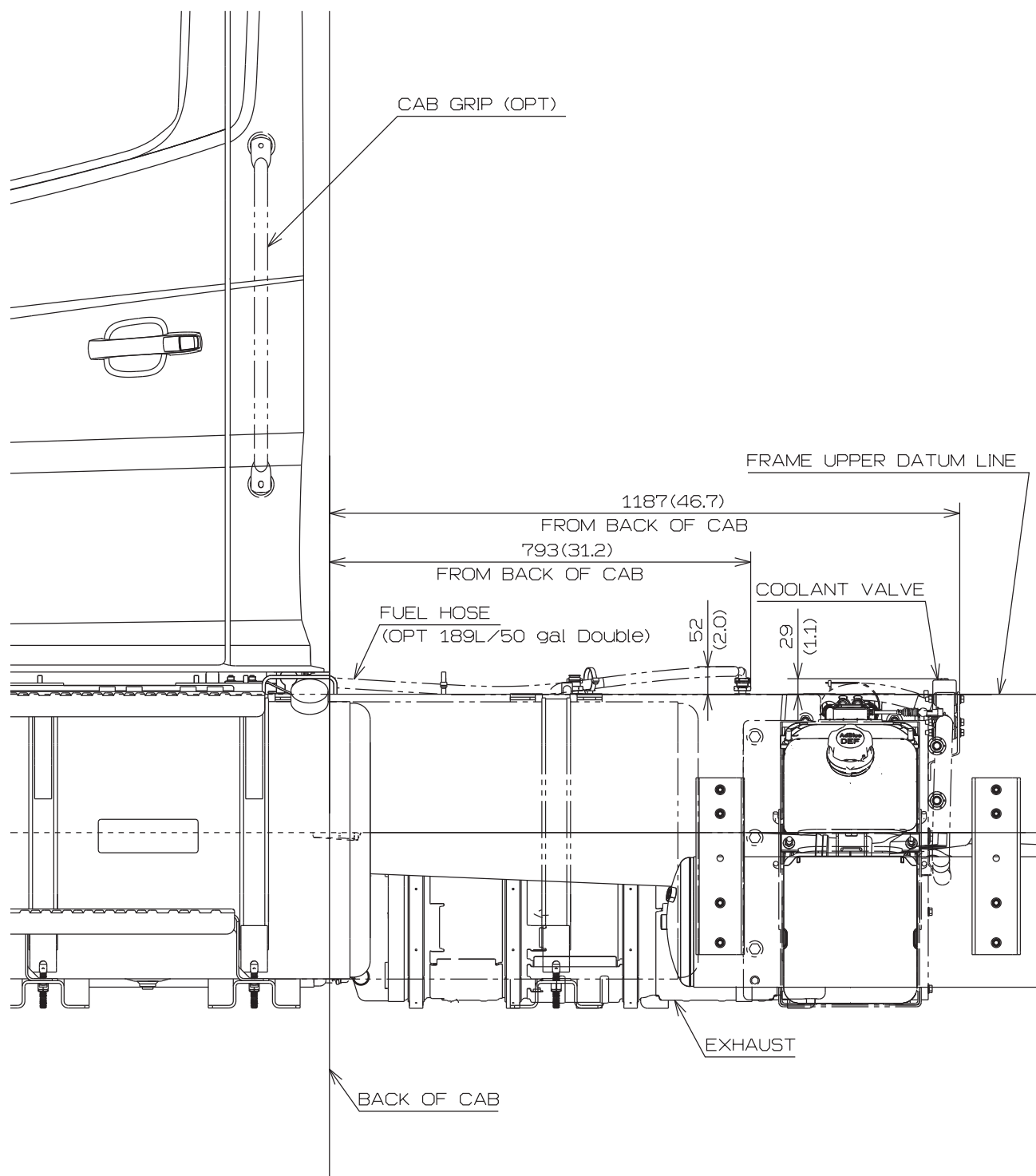
Unit : mm (in.)



**CHASSIS MODEL : NJC1(L6) < Day Cab >  
 NVC1(L7) < Day Cab >  
 NHC1(L8)**

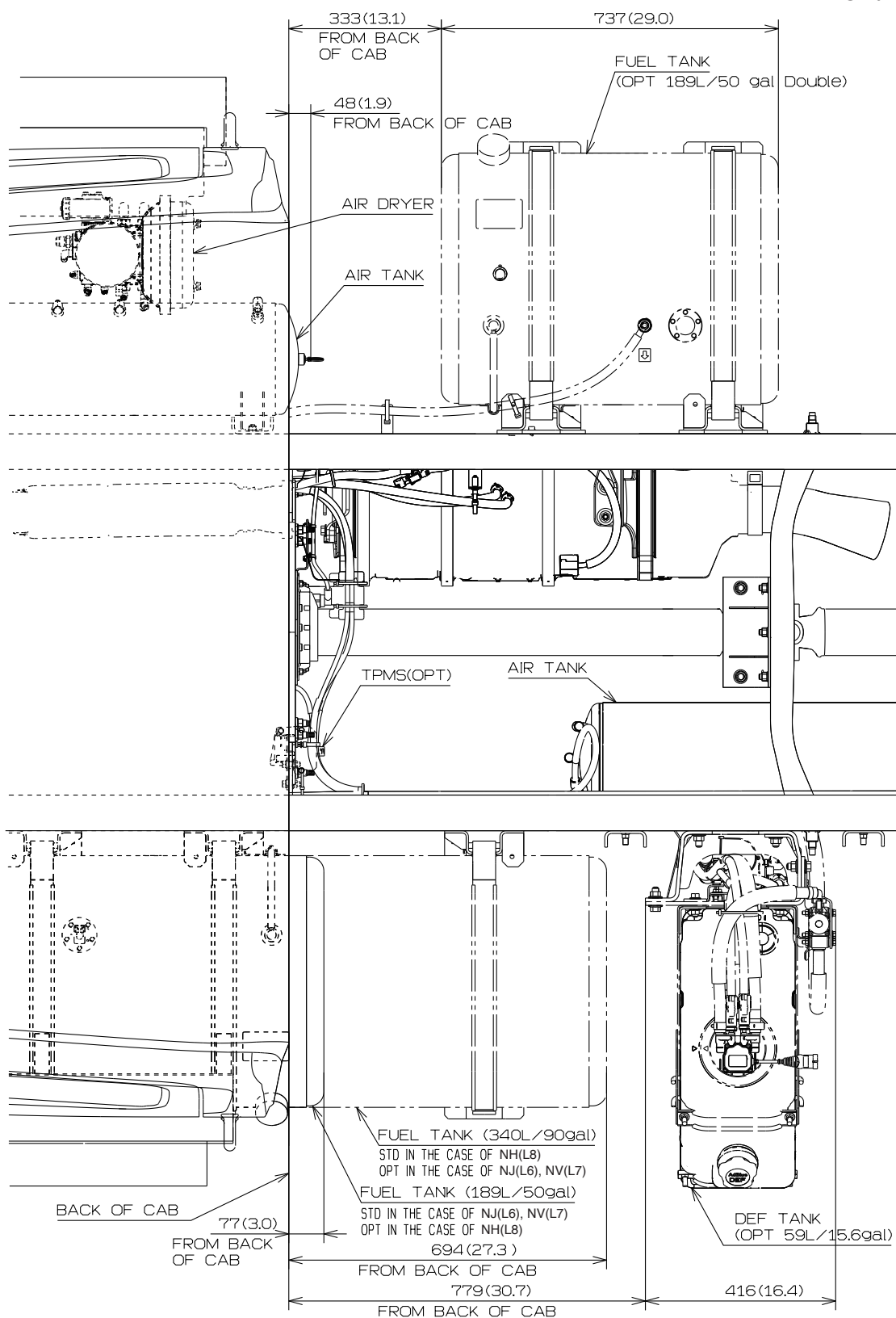
Unit : mm (in.)

• LEFT SIDE VIEW



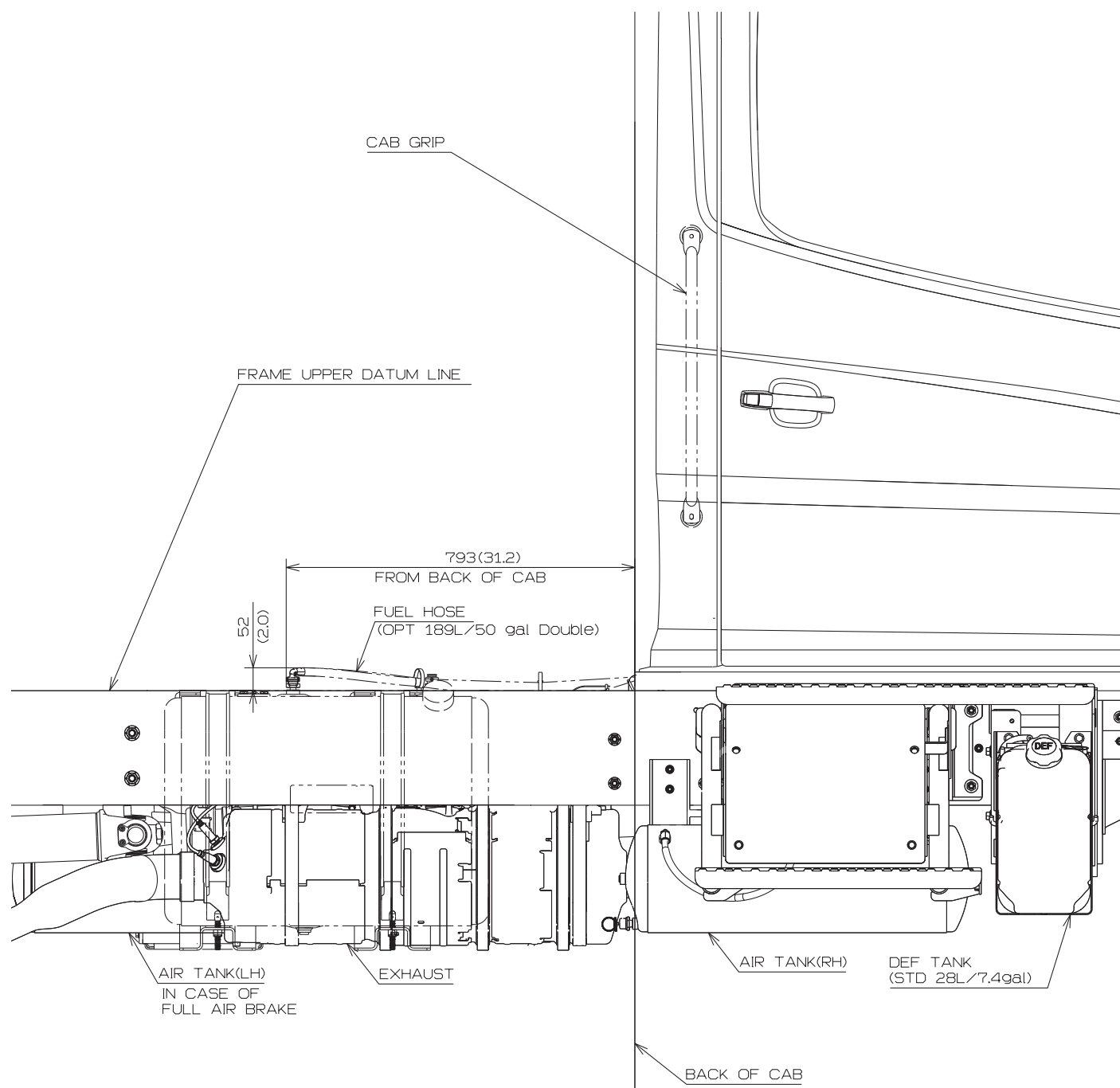
## • UPPER SIDE VIEW

Unit : mm (in.)



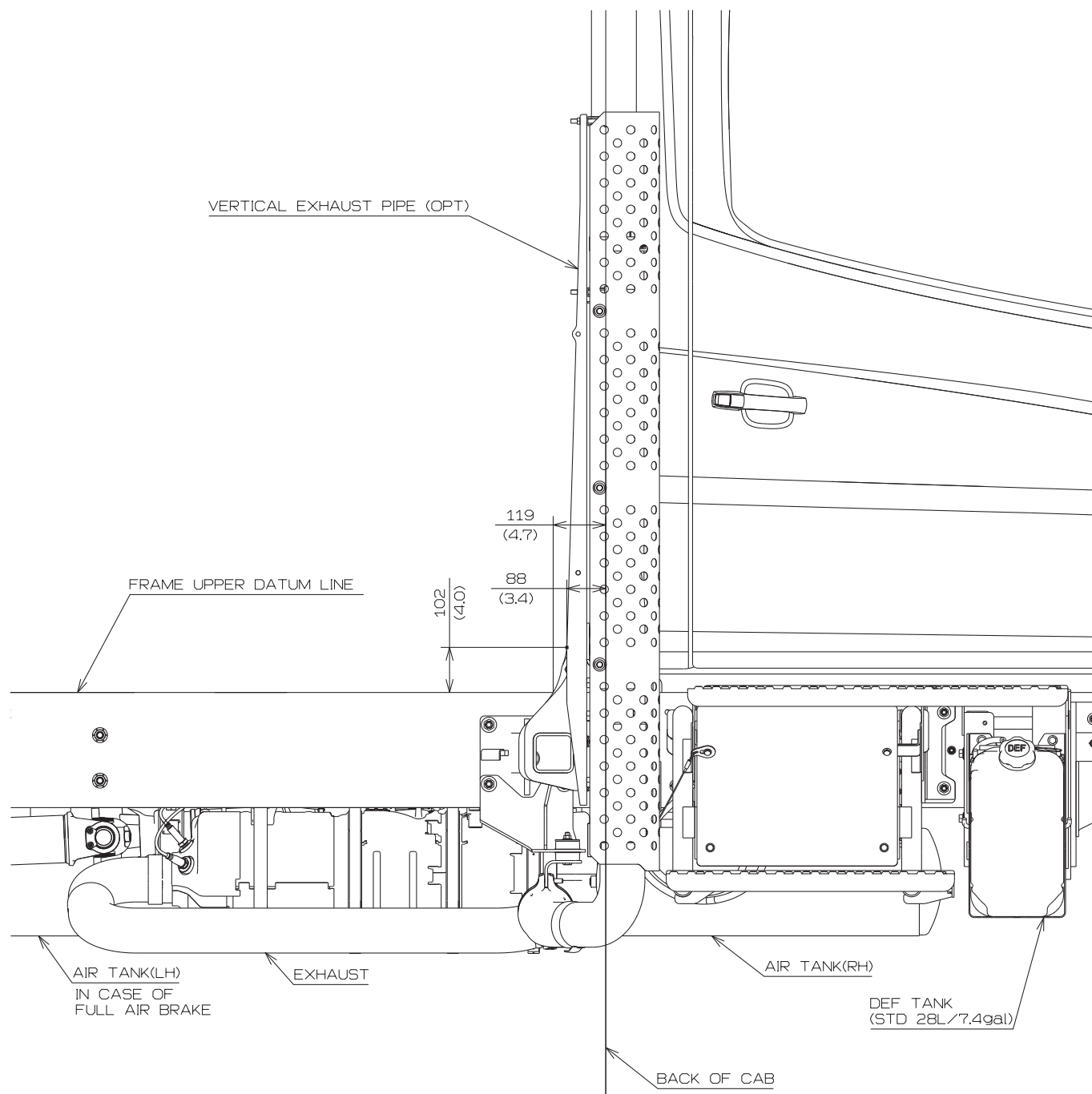
• RIGHT SIDE VIEW  
(HORIZONTAL TAIL)

Unit : mm (in.)



- RIGHT SIDE VIEW  
(VERTICAL TAIL)  
< Day Cab ONLY >

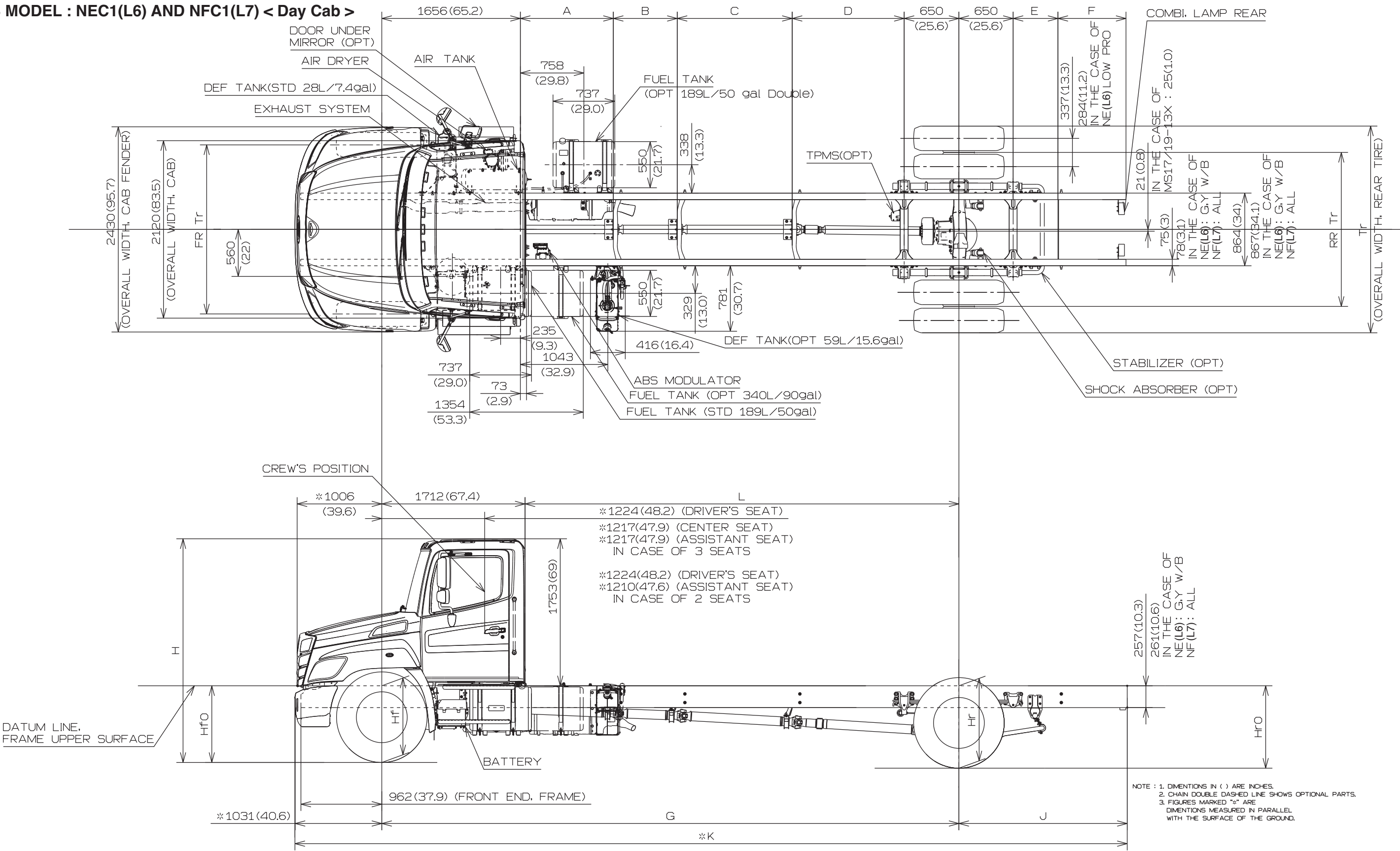
Unit : mm (in.)



3. CHASSIS DRAWINGS

Unit : mm (in.)

CHASSIS MODEL : NEC1(L6) AND NFC1(L7) < Day Cab >



• CHASSIS MODEL : NEC1(L6) AND NFC1(L7) < Day Cab >

DIMENSION OF CHASSIS

Unit : mm (in.)

W/B	A	B	C	D	E	F	G	J *	K *	L
J	804 (31.7)			1335 (52.6)	534 (21.0)	823 (32.4)	4445 (175.0)	2007 (79.0)	7483 (294.6)	2733 (107.6)
L	1109 (43.7)			1335 (52.6)	534 (21.0)	823 (32.4)	4750 (187.0)	2007 (79.0)	7788 (306.6)	3038 (119.6)
M	804 (31.7)	762 (30.0)		1335 (52.6)	534 (21.0)	823 (32.4)	5207 (205.0)	2007 (79.0)	8245 (324.6)	3495 (137.6)
P	804 (31.7)	1067 (42.0)		1335 (52.6)	534 (21.0)	823 (32.4)	5512 (217.0)	2007 (79.0)	8550 (336.6)	3800 (149.6)
R	1109 (43.7)	1219 (48.0)		1335 (52.6)	534 (21.0)	823 (32.4)	5969 (235.0)	2007 (79.0)	9007 (354.6)	4257 (167.6)
T	1109 (43.7)	1676 (66.0)		1335 (52.6)	534 (21.0)	823 (32.4)	6426 (253.0)	2007 (79.0)	9464 (372.6)	4714 (185.6)
V	1109 (43.7)	762 (30.0)	1372 (54.0)	1335 (52.6)	534 (21.0)	823 (32.4)	6883 (271.0)	2007 (79.0)	9921 (390.6)	5171 (203.6)
W	1109 (43.7)	762 (30.0)	1600 (63.0)	1335 (52.6)	534 (21.0)	823 (32.4)	7112 (280.0)	2007 (79.0)	10150 (399.6)	5400 (212.6)

\* In the case of 2464mm (97") ROH, add 457mm (18") to J and K.

W W/B is NF only.

• CHASSIS MODEL : NEC1(L6) AND NFC1(L7) < Day Cab >

DIMENSION OF HEIGHT FROM GROUND

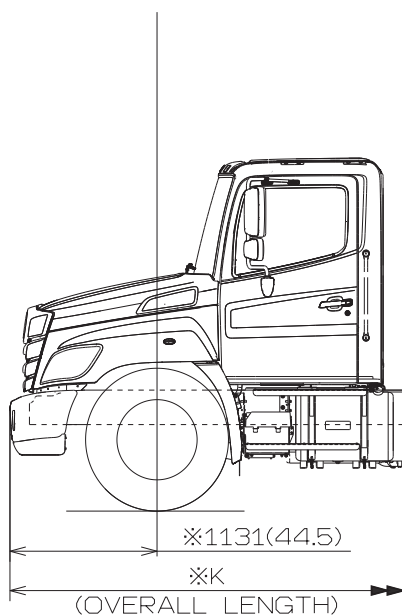
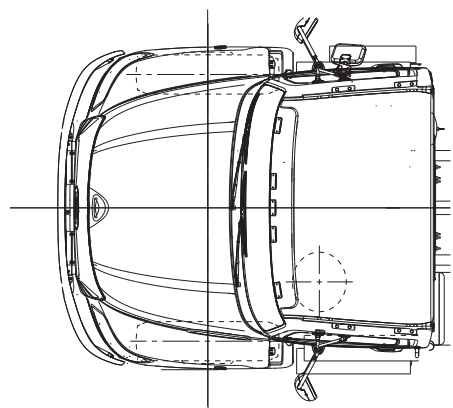
Unit : mm (in.)

MODEL	FR GAWR	TIRE	WHEEL	GROUND HEIGHT, FRAME UPPER SURFACE				FR Tr	RR Tr	Tr	H
				Hf0	Hf	Hr	Hr0				
NEC1 (L6)	8000lbs	245/70R19.5	19.5X6.75-142	830 (32.7)	835 (32.9)	900 (35.4)	930 (36.6)	2025 (79.7)	1840 (72.4)	2360 (92.9)	2615 (103.0)
		11R22.5	22.5X8.25-168	935 (36.8)	945 (37.2)	1010 (39.8)	1035 (40.7)	1985 (78.1)	1830 (72.0)	2445 (96.3)	2720 (107.1)
		255/70R22.5		875 (34.4)	885 (34.8)	950 (37.4)	975 (38.4)	1985 (78.1)	1830 (72.0)	2430 (95.7)	2660 (104.7)
		295/75R22.5		915 (36.0)	925 (36.4)	990 (39.0)	1015 (40.0)	1985 (78.1)	1830 (72.0)	2455 (96.7)	2700 (106.3)
	10000lbs 10900lbs	11R22.5	22.5X8.25-168	925 (36.4)	935 (36.8)	1010 (39.8)	1035 (40.7)	2005 (78.9)	1830 (72.0)	2445 (96.3)	2715 (106.9)
		255/70R22.5		865 (34.1)	875 (34.4)	950 (37.4)	975 (38.4)	2005 (78.9)	1830 (72.0)	2430 (95.7)	2655 (104.5)
		295/75R22.5		905 (35.6)	915 (36.0)	990 (39.0)	1015 (40.0)	2005 (78.9)	1830 (72.0)	2455 (96.7)	2695 (106.1)
NFC1 (L7)	12000lbs	11R22.5	22.5X8.25-168	920 (36.2)	935 (36.8)	1030 (40.6)	1060 (41.7)	2005 (78.9)	1870 (73.6)	2485 (97.8)	2720 (107.1)
		295/75R22.5		900 (35.4)	915 (36.0)	1010 (39.8)	1040 (40.9)	2005 (78.9)	1870 (73.6)	2495 (98.2)	2700 (106.3)



• CHASSIS MODEL : NEC1(L6) AND NFC1(L7) < Day Cab >

OPTIONAL BUMPER



Unit : mm (in.)

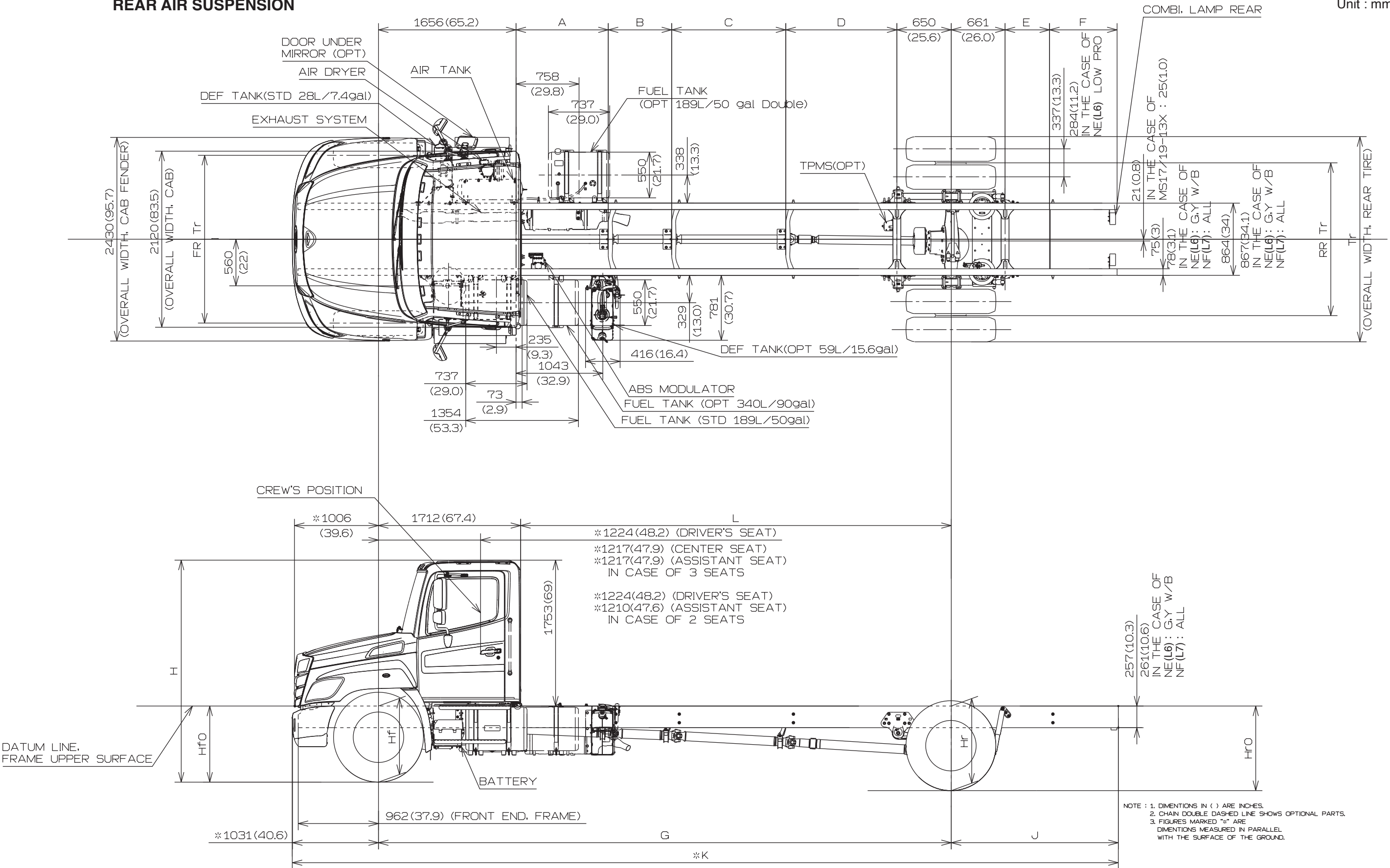
	Wheelbase	K*
J	4,445 (175)	7,582 (298.5)
L	4,750 (187)	7,887 (310.5)
M	5,207 (205)	8,344 (328.5)
P	5,512 (217)	8,649 (340.5)
R	5,969 (235)	9,106 (358.5)
T	6,426 (253)	9,563 (376.5)
V	6,883 (271)	10,020 (394.5)
W	7,112 (280)	10,249 (403.5)

\* In the case of 2464mm (97") ROH, add 457mm (18") to K.

NOTE:1.FIGURES MARKED "※" ARE DIMENSIONS MEASURED  
IN PARALLEL WITH THE SURFACE OF THE GROUND.  
2.DIMENSIONS IN ( ) ARE INCHES.

CHASSIS MODEL : NEC1(L6) AND NFC1(L7) < Day Cab >  
REAR AIR SUSPENSION

Unit : mm (in.)



• CHASSIS MODEL : NEC1(L6) AND NFC1(L7) < Day Cab >  
REAR AIR SUSPENSION

DIMENSION OF CHASSIS

Unit : mm (in.)

W/B	A	B	C	D	E	F	G	J *	K *	L
J	804 (31.7)			1335 (52.6)	523 (20.6)	823 (32.4)	4445 (175.0)	2007 (79.0)	7483 (294.6)	2733 (107.6)
L	1109 (43.7)			1335 (52.6)	523 (20.6)	823 (32.4)	4750 (187.0)	2007 (79.0)	7788 (306.6)	3038 (119.6)
M	804 (31.7)	762 (30.0)		1335 (52.6)	523 (20.6)	823 (32.4)	5207 (205.0)	2007 (79.0)	8245 (324.6)	3495 (137.6)
P	804 (31.7)	1067 (42.0)		1335 (52.6)	523 (20.6)	823 (32.4)	5512 (217.0)	2007 (79.0)	8550 (336.6)	3800 (149.6)
R	1109 (43.7)	1219 (48.0)		1335 (52.6)	523 (20.6)	823 (32.4)	5969 (235.0)	2007 (79.0)	9007 (354.6)	4257 (167.6)
T	1109 (43.7)	1676 (66.0)		1335 (52.6)	523 (20.6)	823 (32.4)	6426 (253.0)	2007 (79.0)	9464 (372.6)	4714 (185.6)
V	1109 (43.7)	762 (30.0)	1372 (54.0)	1335 (52.6)	523 (20.6)	823 (32.4)	6883 (271.0)	2007 (79.0)	9921 (390.6)	5171 (203.6)
W	1109 (43.7)	762 (30.0)	1600 (63.0)	1335 (52.6)	523 (20.6)	823 (32.4)	7112 (280.0)	2007 (79.0)	10150 (399.6)	5400 (212.6)

\* In the case of 2464mm (97") ROH, add 457mm (18") to J and K.

W W/B is NF only.

• CHASSIS MODEL : NEC1(L6) AND NFC1(L7) < Day Cab >  
REAR AIR SUSPENSION

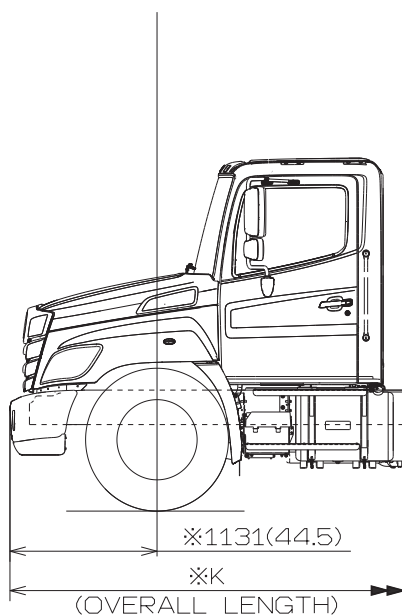
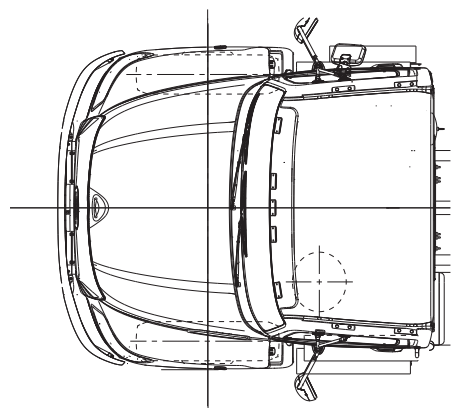
DIMENSION OF HEIGHT FROM GROUND

Unit : mm (in.)

MODEL	FR GAWR	TIRE	WHEEL	GROUND HEIGHT, FRAME UPPER SURFACE				FR Tr	RR Tr	Tr	H
				Hf0	Hf	Hr	Hr0				
NEC1 (L6)	8000lbs	245/70R19.5	19.5X6.75-142	830 (32.7)	835 (32.9)	885 (34.8)	900 (35.4)	2025 (79.7)	1840 (72.4)	2360 (92.9)	2610 (102.8)
		11R22.5	22.5X8.25-168	935 (36.8)	945 (37.2)	990 (39.0)	1005 (39.6)	1985 (78.1)	1830 (72.0)	2445 (96.3)	2715 (106.9)
		255/70R22.5		875 (34.4)	885 (34.8)	930 (36.6)	945 (37.2)	1985 (78.1)	1830 (72.0)	2430 (95.7)	2655 (104.5)
		295/75R22.5		915 (36.0)	925 (36.4)	970 (38.2)	985 (38.8)	1985 (78.1)	1830 (72.0)	2455 (96.7)	2695 (106.1)
	10000lbs 10900lbs	11R22.5	22.5X8.25-168	925 (36.4)	935 (36.8)	990 (39.0)	1015 (40.0)	2005 (78.9)	1830 (72.0)	2445 (96.3)	2710 (106.7)
		255/70R22.5		865 (34.1)	875 (34.4)	930 (36.6)	955 (37.6)	2005 (78.9)	1830 (72.0)	2430 (95.7)	2650 (104.3)
		295/75R22.5		905 (35.6)	915 (36.0)	970 (38.2)	995 (39.2)	2005 (78.9)	1830 (72.0)	2455 (96.7)	2690 (105.9)
NFC1 (L7)	12000lbs	11R22.5	22.5X8.25-168	930 (36.6)	940 (37.0)	995 (39.2)	1010 (39.8)	2005 (78.9)	1870 (73.6)	2485 (97.8)	2710 (106.7)
		295/75R22.5		910 (35.8)	920 (36.2)	975 (38.4)	990 (39.0)	2005 (78.9)	1870 (73.6)	2495 (98.2)	2690 (105.9)

• CHASSIS MODEL : NEC1(L6) AND NFC1(L7) < Day Cab >  
REAR AIR SUSPENSION

OPTIONAL BUMPER



Unit : mm (in.)

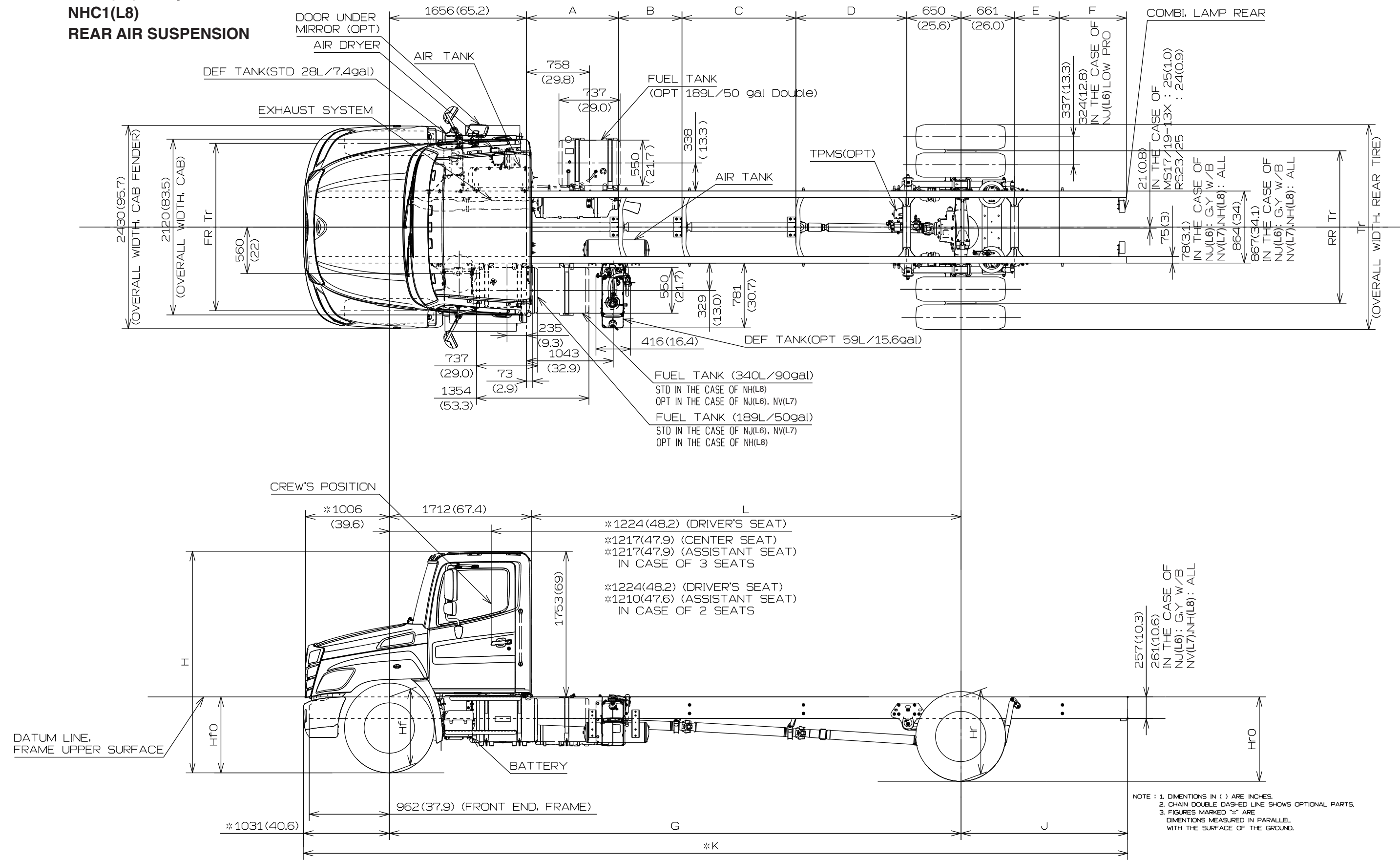
	Wheelbase	K*
J	4,445 (175)	7,582 (298.5)
L	4,750 (187)	7,887 (310.5)
M	5,207 (205)	8,344 (328.5)
P	5,512 (217)	8,649 (340.5)
R	5,969 (235)	9,106 (358.5)
T	6,426 (253)	9,563 (376.5)
V	6,883 (271)	10,020 (394.5)
W	7,112 (280)	10,249 (403.5)

\* In the case of 2464mm (97") ROH, add 457mm (18") to K.

NOTE:1.FIGURES MARKED "※" ARE DIMENSIONS MEASURED  
IN PARALLEL WITH THE SURFACE OF THE GROUND.  
2.DIMENSIONS IN ( ) ARE INCHES.

CHASSIS MODEL : NJC1(L6) < Day Cab >  
NVC1(L7) < Day Cab >  
NHC1(L8)  
REAR AIR SUSPENSION

Unit : mm (in.)



• CHASSIS MODEL : NJC1(L6) < Day Cab >  
 NVC1(L7) < Day Cab >  
 NHC1(L8)  
 REAR AIR SUSPENSION

DIMENSION OF CHASSIS

Unit : mm (in.)

W/B	A	B	C	D	E	F	G	J *	K *	L
J	804 (31.7)			1335 (52.6)	523 (20.6)	823 (32.4)	4445 (175.0)	2007 (79.0)	7483 (294.6)	2733 (107.6)
L	1109 (43.7)			1335 (52.6)	523 (20.6)	823 (32.4)	4750 (187.0)	2007 (79.0)	7788 (306.6)	3038 (119.6)
M	804 (31.7)	762 (30.0)		1335 (52.6)	523 (20.6)	823 (32.4)	5207 (205.0)	2007 (79.0)	8245 (324.6)	3495 (137.6)
P	804 (31.7)	1067 (42.0)		1335 (52.6)	523 (20.6)	823 (32.4)	5512 (217.0)	2007 (79.0)	8550 (336.6)	3800 (149.6)
R	1109 (43.7)	1219 (48.0)		1335 (52.6)	523 (20.6)	823 (32.4)	5969 (235.0)	2007 (79.0)	9007 (354.6)	4257 (167.6)
T	1109 (43.7)	1676 (66.0)		1335 (52.6)	523 (20.6)	823 (32.4)	6426 (253.0)	2007 (79.0)	9464 (372.6)	4714 (185.6)
V	1109 (43.7)	762 (30.0)	1372 (54.0)	1335 (52.6)	523 (20.6)	823 (32.4)	6883 (271.0)	2007 (79.0)	9921 (390.6)	5171 (203.6)

\* In the case of 2464mm (97") ROH, add 457mm (18") to J and K.

• CHASSIS MODEL : NJC1(L6) < Day Cab >  
 NVC1(L7) < Day Cab >  
 NHC1(L8)  
 REAR AIR SUSPENSION

DIMENSION OF HEIGHT FROM GROUND

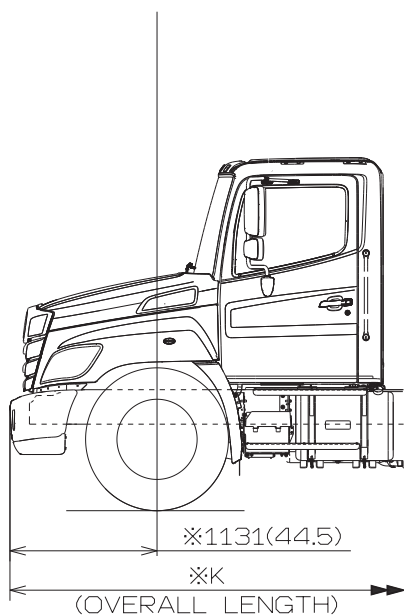
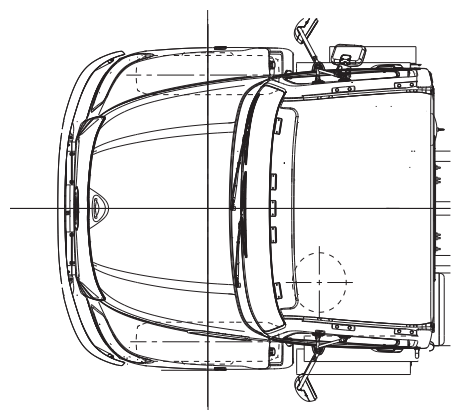
Unit : mm (in.)

MODEL	FR GAWR	RR GAWR	RR AXLE	BRAKE TYPE	TIRE	WHEEL	GROUND HEIGHT, FRAME UPPER SURFACE				FR Tr	RR Tr	Tr	H
							Hf0	Hf	Hr	Hr0				
NJC1 (L6)	8000lbs	17500lbs	MS17-13X	DRUM	245/70R19.5	19.5X7.50-162	835 (32.9)	840 (33.1)	885 (34.8)	900 (35.4)	2030 (79.9)	1840 (72.4)	2410 (94.9)	2610 (102.8)
			MS17-14X				835 (32.9)	840 (33.1)	885 (34.8)	900 (35.4)	2030 (79.9)	1835 (72.2)	2410 (94.9)	2610 (102.8)
		19000lbs	MS19		11R22.5	22.5X8.25-168	940 (37.0)	950 (37.4)	990 (39.0)	1005 (39.6)	2020 (79.5)	1835 (72.2)	2450 (96.5)	2720 (107.1)
					255/70R22.5		880 (34.6)	890 (35.0)	930 (36.6)	945 (37.2)	2020 (79.5)	1835 (72.2)	2435 (95.9)	2660 (104.7)
					295/75R22.5		920 (36.2)	930 (36.6)	970 (38.2)	985 (38.8)	2020 (79.5)	1835 (72.2)	2460 (96.9)	2700 (106.3)
					11R22.5		925 (36.4)	935 (36.8)	990 (39.0)	1015 (40.0)	2020 (79.5)	1835 (72.2)	2450 (96.5)	2710 (106.7)
	10000lbs	19000lbs	DRUM	255/70R22.5	22.5X8.25-168	865 (34.1)	875 (34.4)	930 (36.6)	955 (37.6)	2020 (79.5)	1835 (72.2)	2435 (95.9)	2650 (104.3)	
				295/75R22.5		905 (35.6)	915 (36.0)	970 (38.2)	995 (39.2)	2020 (79.5)	1835 (72.2)	2460 (96.9)	2690 (105.9)	
				11R22.5		925 (36.4)	935 (36.8)	990 (39.0)	1015 (40.0)	2030 (79.9)	1840 (72.4)	2455 (96.7)	2710 (106.7)	
			DISC	255/70R22.5		865 (34.1)	875 (34.4)	930 (36.6)	955 (37.6)	2030 (79.9)	1840 (72.4)	2440 (96.1)	2650 (104.3)	
				295/75R22.5		905 (35.6)	915 (36.0)	970 (38.2)	995 (39.2)	2030 (79.9)	1840 (72.4)	2465 (97.0)	2690 (105.9)	
				11R22.5		925 (36.4)	935 (36.8)	995 (39.2)	1010 (39.8)	2020 (79.5)	1835 (72.2)	2450 (96.5)	2710 (106.7)	
NVC1 (L7)	10000lbs 12000lbs	21000lbs 23000lbs	MS21 / RS23 / RS25	DRUM	11R22.5	22.5X8.25-168	925 (36.4)	935 (36.8)	995 (39.2)	1010 (39.8)	2020 (79.5)	1835 (72.2)	2450 (96.5)	2710 (106.7)
		21000lbs	MS21		295/75R22.5		905 (35.6)	915 (36.0)	975 (38.4)	990 (39.0)	2020 (79.5)	1835 (72.2)	2460 (96.9)	2690 (105.9)
	12000lbs	21000lbs	MS21	DISC	11R22.5		925 (36.4)	935 (36.8)	995 (39.2)	1010 (39.8)	2030 (79.9)	1840 (72.4)	2455 (96.7)	2710 (106.7)
					295/75R22.5		905 (35.6)	915 (36.0)	975 (38.4)	990 (39.0)	2030 (79.9)	1840 (72.4)	2465 (97.0)	2690 (105.9)
	13200lbs	23000lbs	RS23 / RS25	DRUM	11R22.5		940 (37.0)	945 (37.2)	995 (39.2)	1005 (39.6)	2020 (79.5)	1835 (72.2)	2450 (96.5)	2715 (106.9)
NHC1 (L8)	12000lbs	23000lbs	RS23-160 RS25-160	DRUM	11R22.5	22.5X8.25-168	925 (36.4)	935 (36.8)	995 (39.2)	1010 (39.8)	2020 (79.5)	1835 (72.2)	2450 (96.5)	2710 (106.7)
	13200lbs	23000lbs	RS23-160 RS25-160		11R22.5		940 (37.0)	945 (37.2)	995 (39.2)	1005 (39.6)	2020 (79.5)	1835 (72.2)	2450 (96.5)	2715 (106.9)
	14000lbs	22700lbs	RS23-160 RS25-160		Fr : 295/75R22.5-7160 Rr : 295/75R22.5		920 (36.2)	925 (36.4)	975 (38.4)	985 (38.8)	2020 (79.5)	1835 (72.2)	2460 (96.9)	2695 (106.1)



- CHASSIS MODEL : NJC1(L6) < Day Cab >  
NVC1(L7) < Day Cab >  
NHC1(L8)  
REAR AIR SUSPENSION

## OPTIONAL BUMPER



Unit : mm (in.)

	Wheelbase	K*
J	4,445 (175)	7,582 (298.5)
L	4,750 (187)	7,887 (310.5)
M	5,207 (205)	8,344 (328.5)
P	5,512 (217)	8,649 (340.5)
R	5,969 (235)	9,106 (358.5)
T	6,426 (253)	9,563 (376.5)
V	6,883 (271)	10,020 (394.5)

\* In the case of 2464mm (97") ROH, add 457mm (18") to K.

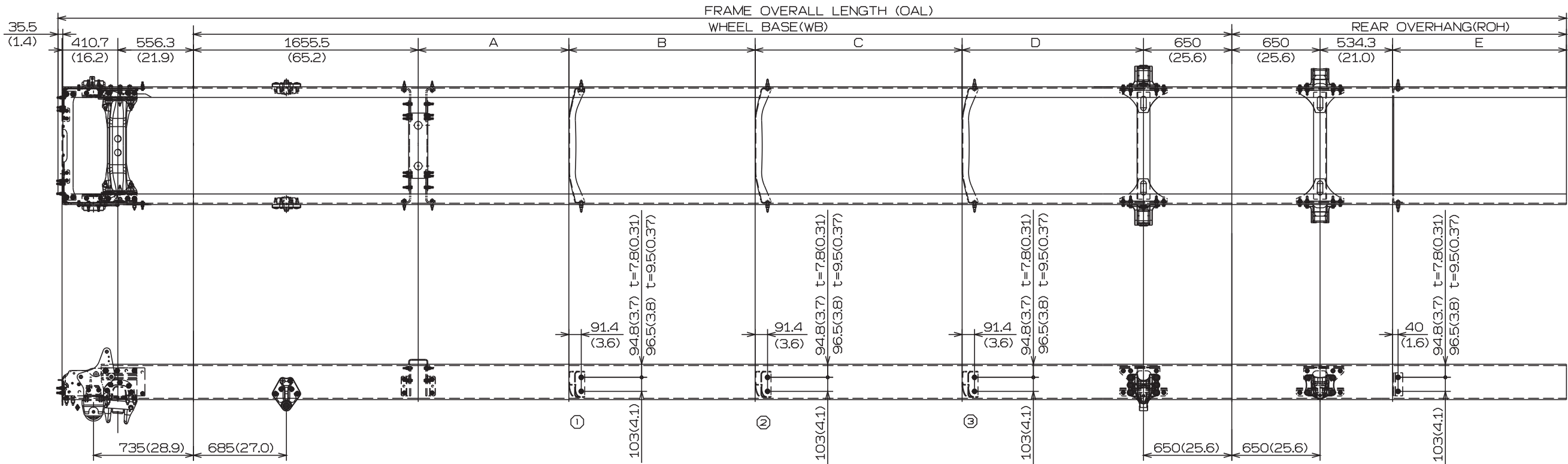
NOTE:1.FIGURES MARKED "※" ARE DIMENSIONS MEASURED  
IN PARALLEL WITH THE SURFACE OF THE GROUND.  
2.DIMENSIONS IN ( ) ARE INCHES.

4. CHASSIS FRAME DRAWINGS

Unit : mm (in.)

CHASSIS MODEL : All models with day cab leaf suspension

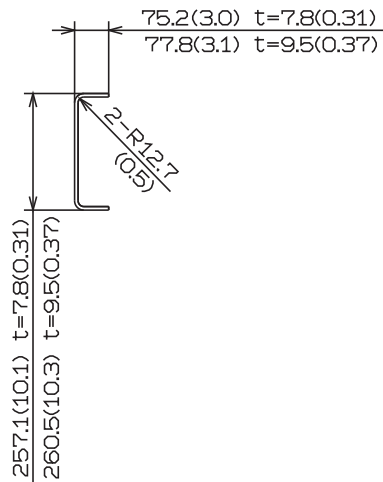
1) DETAIL OF CHASSIS FRAME



DIMENSION OF CHASSIS

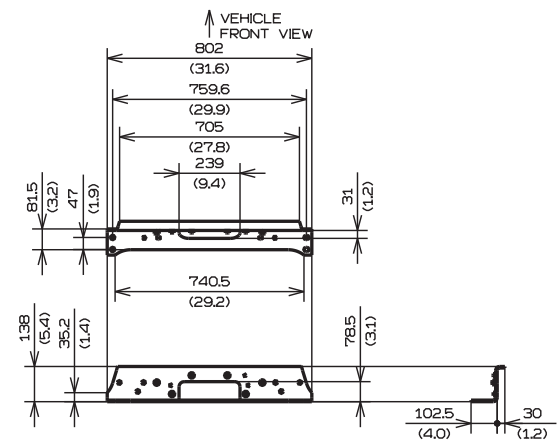
	WB	A	B	C	D	E	ROH	OAL
J	4445.0 (175)	804.1 (31.7)	1335.4 (52.6)			822.7 (32.4) 1279.7 (50.4)	2007 (79) 2464 (97)	7449.0 (293.3) 7906.0 (311.3)
L	4749.8 (187)	1108.9 (43.7)	1335.4 (52.6)			822.7 (32.4) 1279.7 (50.4)	2007 (79) 2464 (97)	7753.8 (305.3) 8210.8 (323.3)
M	5207.0 (205)	804.1 (31.7)	762 (30)	1335.4 (52.6)		822.7 (32.4) 1279.7 (50.4)	2007 (79) 2464 (97)	8211.0 (323.3) 8668.0 (341.3)
P	5511.8 (217)	804.1 (31.7)	1066.8 (42)	1335.4 (52.6)		822.7 (32.4) 1279.7 (50.4)	2007 (79) 2464 (97)	8515.8 (335.3) 8972.8 (353.3)
R	5969.0 (235)	1108.9 (43.7)	1219.2 (48)	1335.4 (52.6)		822.7 (32.4) 1279.7 (50.4)	2007 (79) 2464 (97)	8973.0 (353.3) 9430.0 (371.3)
T	6426.2 (253)	1108.9 (43.7)	1676.4 (66)	1335.4 (52.6)		822.7 (32.4) 1279.7 (50.4)	2007 (79) 2464 (97)	9430.2 (371.3) 9887.2 (389.3)
V	6883.4 (271)	1108.9 (43.7)	762 (30)	1371.6 (54)	1335.4 (52.6)	822.7 (32.4) 1279.7 (50.4)	2007 (79) 2464 (97)	9887.4 (389.3) 10344.4 (407.3)
W	7112.0 (280)	1108.9 (43.7)	762 (30)	1600.2 (63)	1335.4 (52.6)	822.7 (32.4) 1279.7 (50.4)	2007 (79) 2464 (97)	10116.0 (398.3) 10573.0 (416.3)

DETAIL OF FRAME END

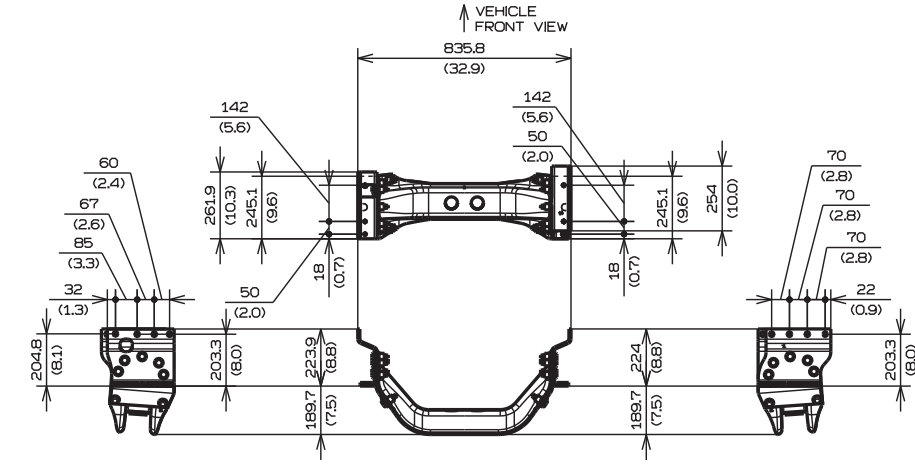


2) DETAIL OF CROSSMEMBER

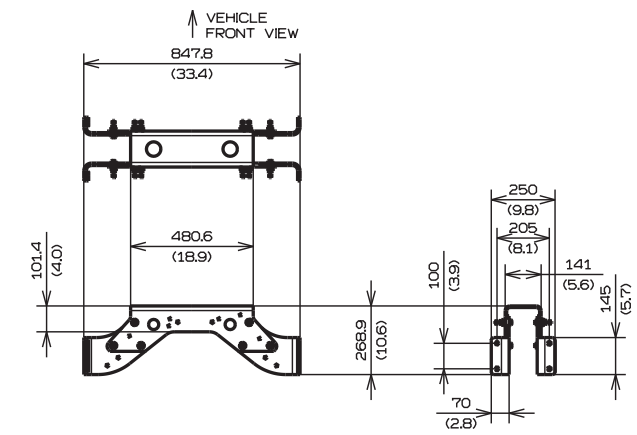
Unit : mm (in.)



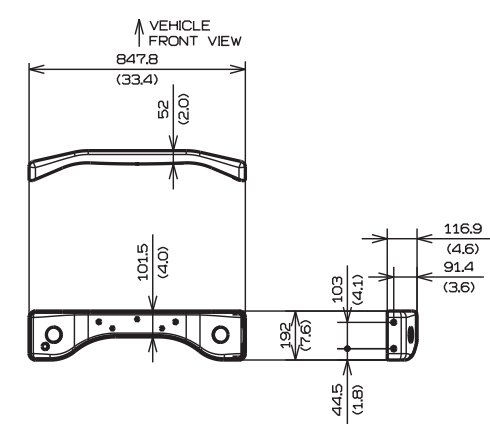
NO.1 CROSSMEMBER



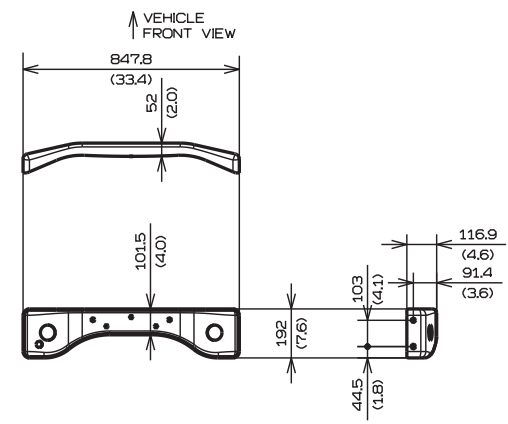
NO.2 CROSSMEMBER



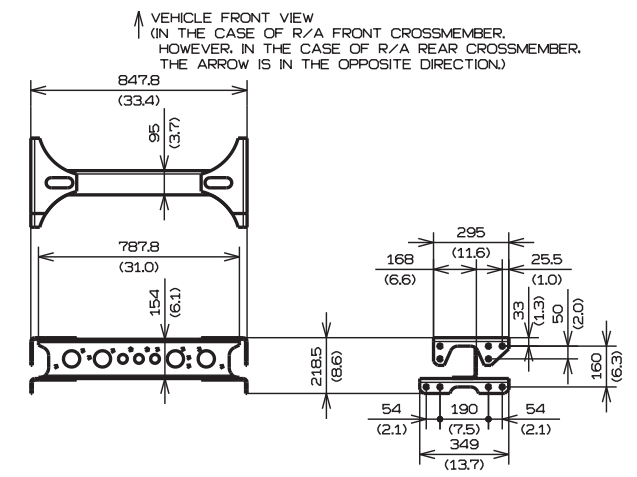
NO.3 CROSSMEMBER



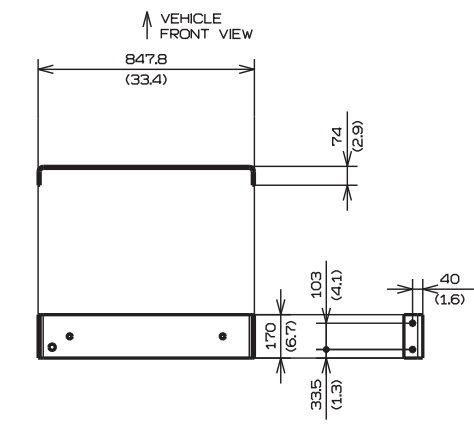
① DOGBORNE STYLE CROSSMEMBER (REINFORCED)



②, ③ DOGBORNE STYLE CROSSMEMBER (NON-REINFORCED)



WELDED STYLE CROSSMEMBER (R/A FRONT CROSSMEMBER AND R/A REAR CROSSMEMBER)

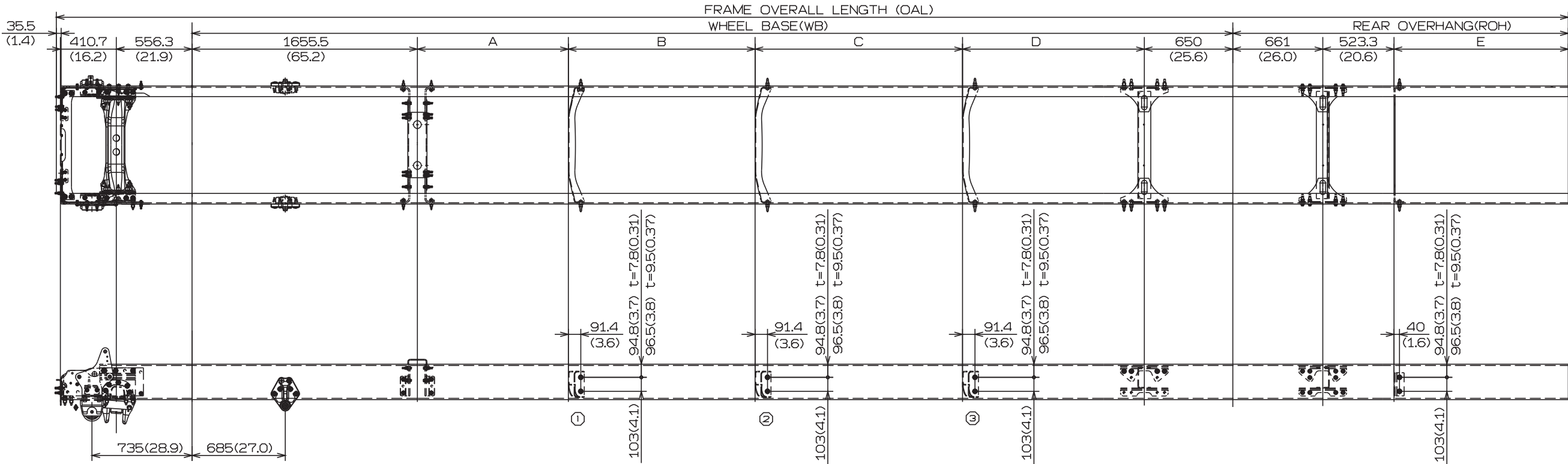


END CROSSMEMBER

CHASSIS MODEL : All models with day cab air suspension

1) DETAIL OF CHASSIS FRAME

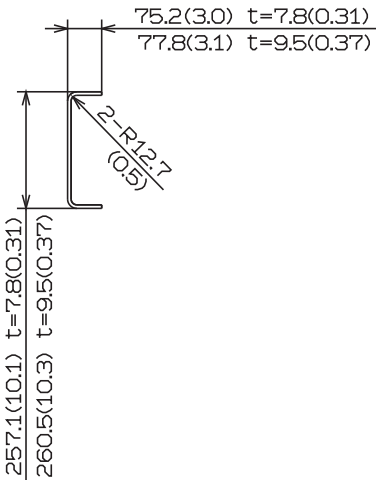
Unit : mm (in.)



DIMENSION OF CHASSIS

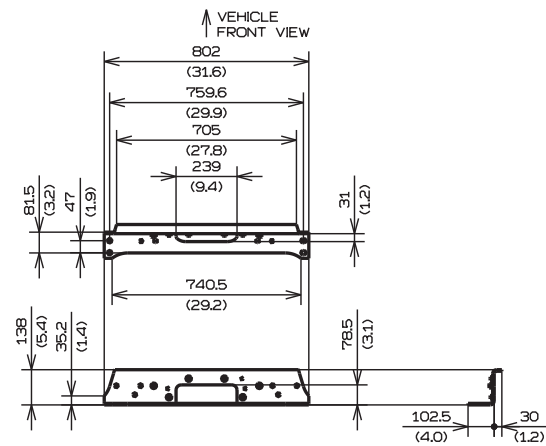
	WB	A	B	C	D	E	ROH	OAL
J	4445.0 (175)	804.1 (31.7)	1335.4 (52.6)			822.7 (32.4) 1279.7 (50.4)	2007 (79) 2464 (97)	7449.0 (293.3) 7906.0 (311.3)
L	4749.8 (187)	1108.9 (43.7)	1335.4 (52.6)			822.7 (32.4) 1279.7 (50.4)	2007 (79) 2464 (97)	7753.8 (305.3) 8210.8 (323.3)
M	5207.0 (205)	804.1 (31.7)	762 (30)	1335.4 (52.6)		822.7 (32.4) 1279.7 (50.4)	2007 (79) 2464 (97)	8211.0 (323.3) 8668.0 (341.3)
P	5511.8 (217)	804.1 (31.7)	1066.8 (42)	1335.4 (52.6)		822.7 (32.4) 1279.7 (50.4)	2007 (79) 2464 (97)	8515.8 (335.3) 8972.8 (353.3)
R	5969.0 (235)	1108.9 (43.7)	1219.2 (48)	1335.4 (52.6)		822.7 (32.4) 1279.7 (50.4)	2007 (79) 2464 (97)	8973.0 (353.3) 9430.0 (371.3)
T	6426.2 (253)	1108.9 (43.7)	1676.4 (66)	1335.4 (52.6)		822.7 (32.4) 1279.7 (50.4)	2007 (79) 2464 (97)	9430.2 (371.3) 9887.2 (389.3)
V	6883.4 (271)	1108.9 (43.7)	762 (30)	1371.6 (54)	1335.4 (52.6)	822.7 (32.4) 1279.7 (50.4)	2007 (79) 2464 (97)	9887.4 (389.3) 10344.4 (407.3)
W	7112.0 (280)	1108.9 (43.7)	762 (30)	1600.2 (63)	1335.4 (52.6)	822.7 (32.4) 1279.7 (50.4)	2007 (79) 2464 (97)	10116.0 (398.3) 10573.0 (416.3)

DETAIL OF FRAME END

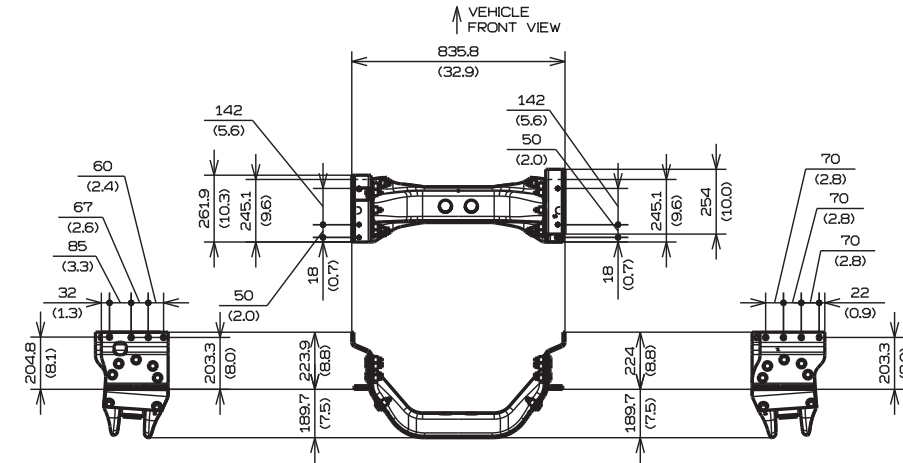


## 2) DETAIL OF CROSSMEMBER

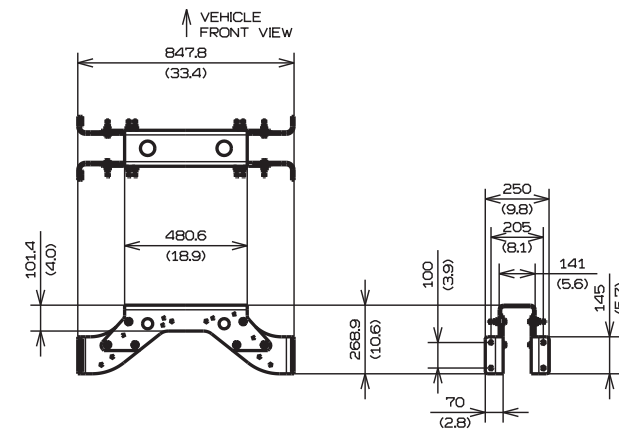
Unit : mm (in.)



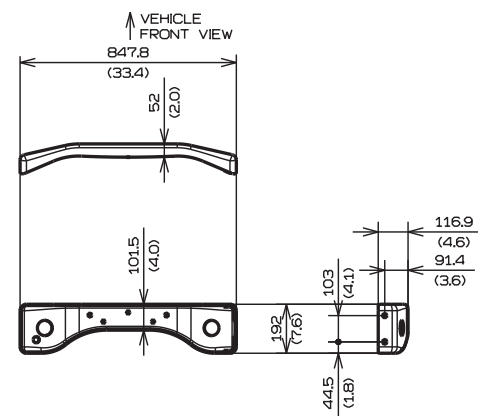
NO.1 CROSSMEMBER



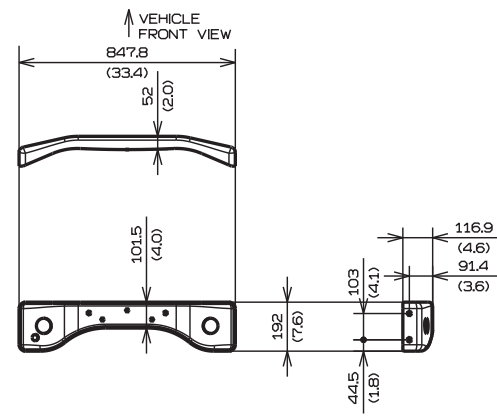
NO.2 CROSSMEMBER



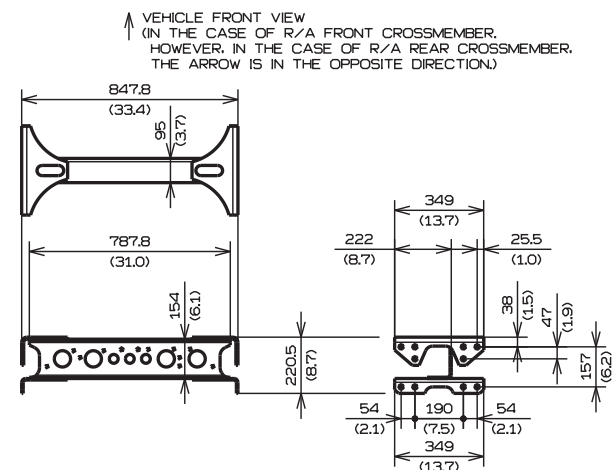
NO.3 CROSSMEMBER



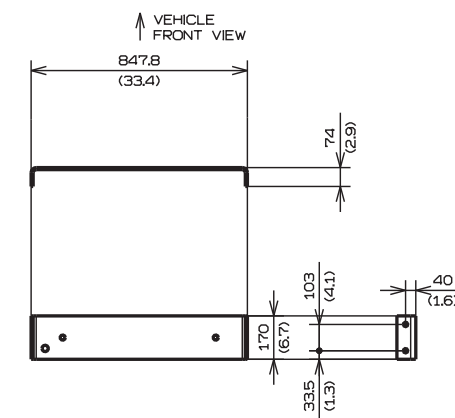
① DOGBORNE STYLE CROSSMEMBER  
(REINFORCED)



②, ③ DOGBORNE STYLE CROSSMEMBER  
(NON-REINFORCED)



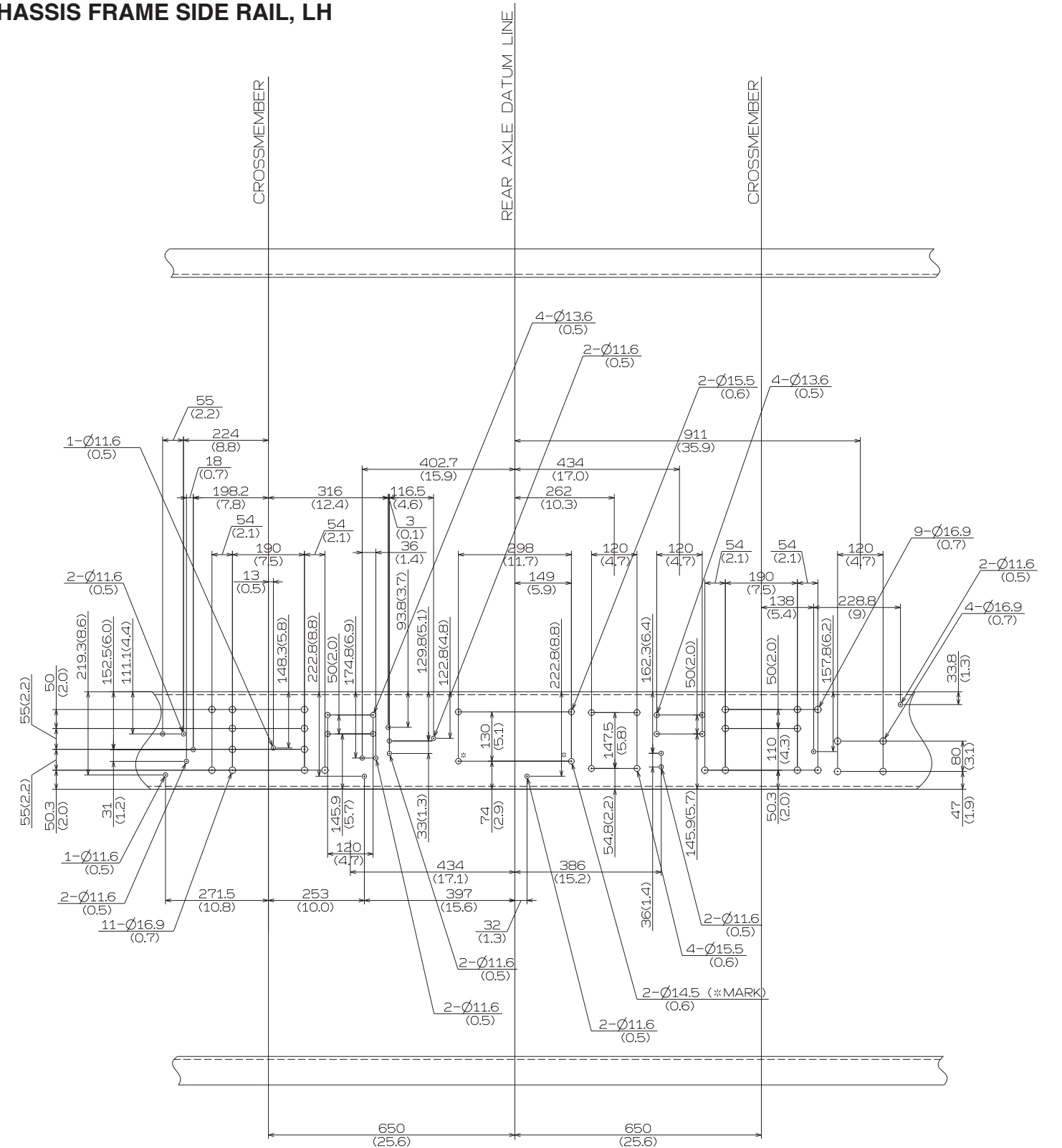
WELDED STYLE CROSSMEMBER  
(R/A FRONT CROSSMEMBER AND  
R/A REAR CROSSMEMBER)



END CROSSMEMBER

**CHASSIS MODEL : NEC1(L6) FOR LEAF SUS. WITH HYDRAULIC BRAKE SERIES  
{FRAME THICKNESS 7.8 mm (0.31 in.)}**

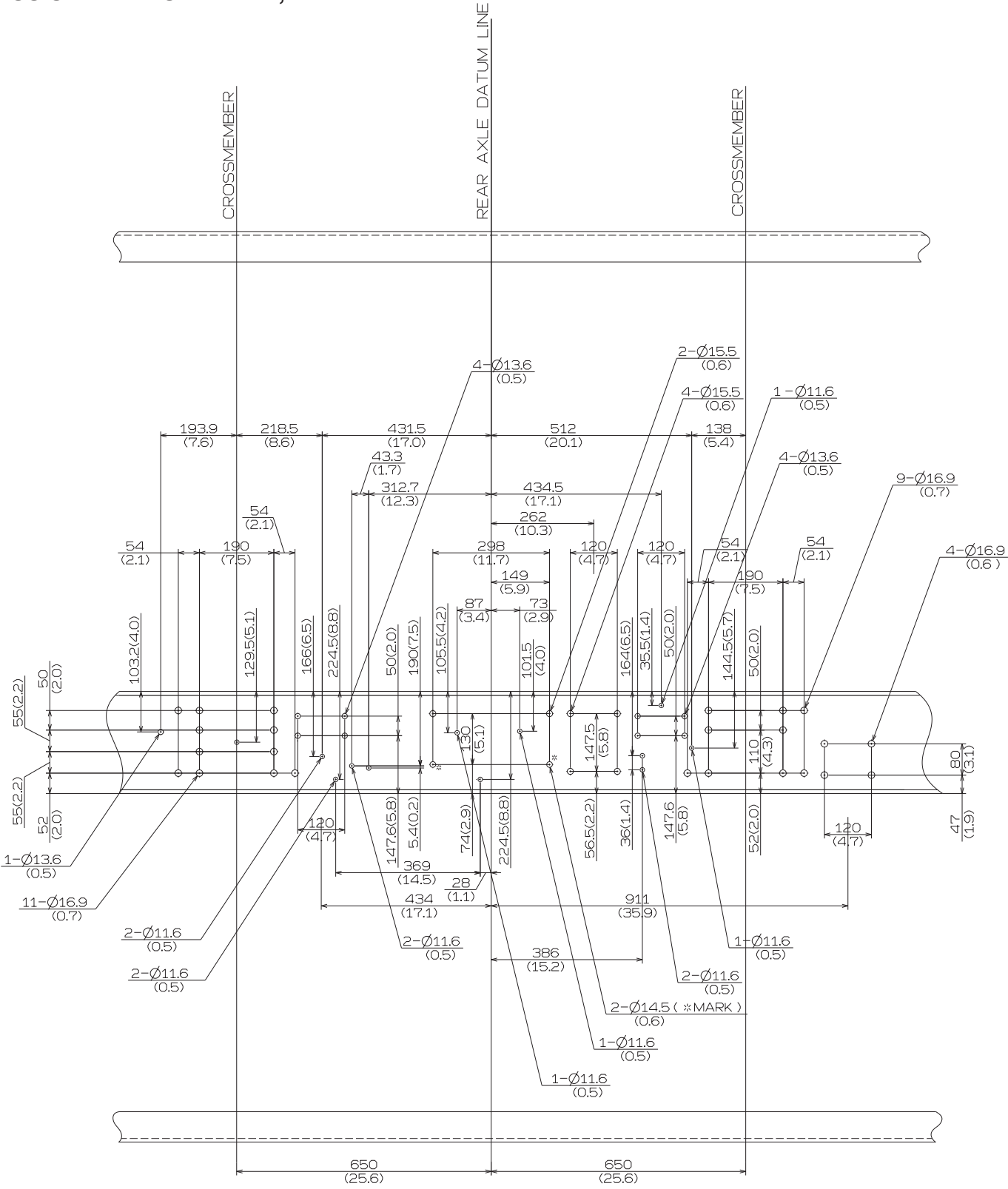
- CHASSIS FRAME SIDE RAIL, RH



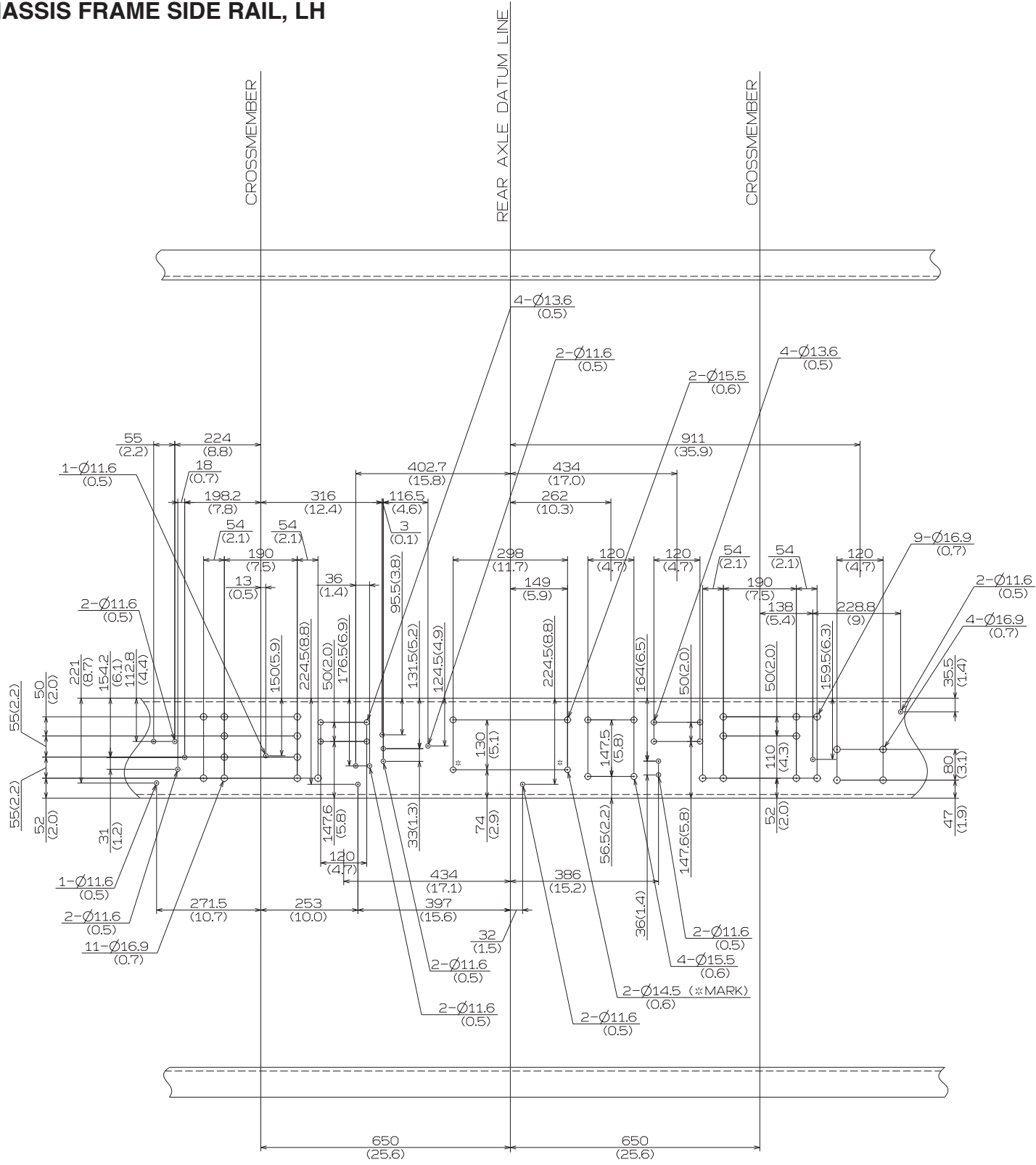
CHASSIS MODEL : NFC1(L7) FOR LEAF SUS. WITH HYDRAULIC BRAKE SERIES  
{FRAME THICKNESS 9.5 mm (0.37 in.)}

Unit : mm (in.)

• CHASSIS FRAME SIDE RAIL, RH



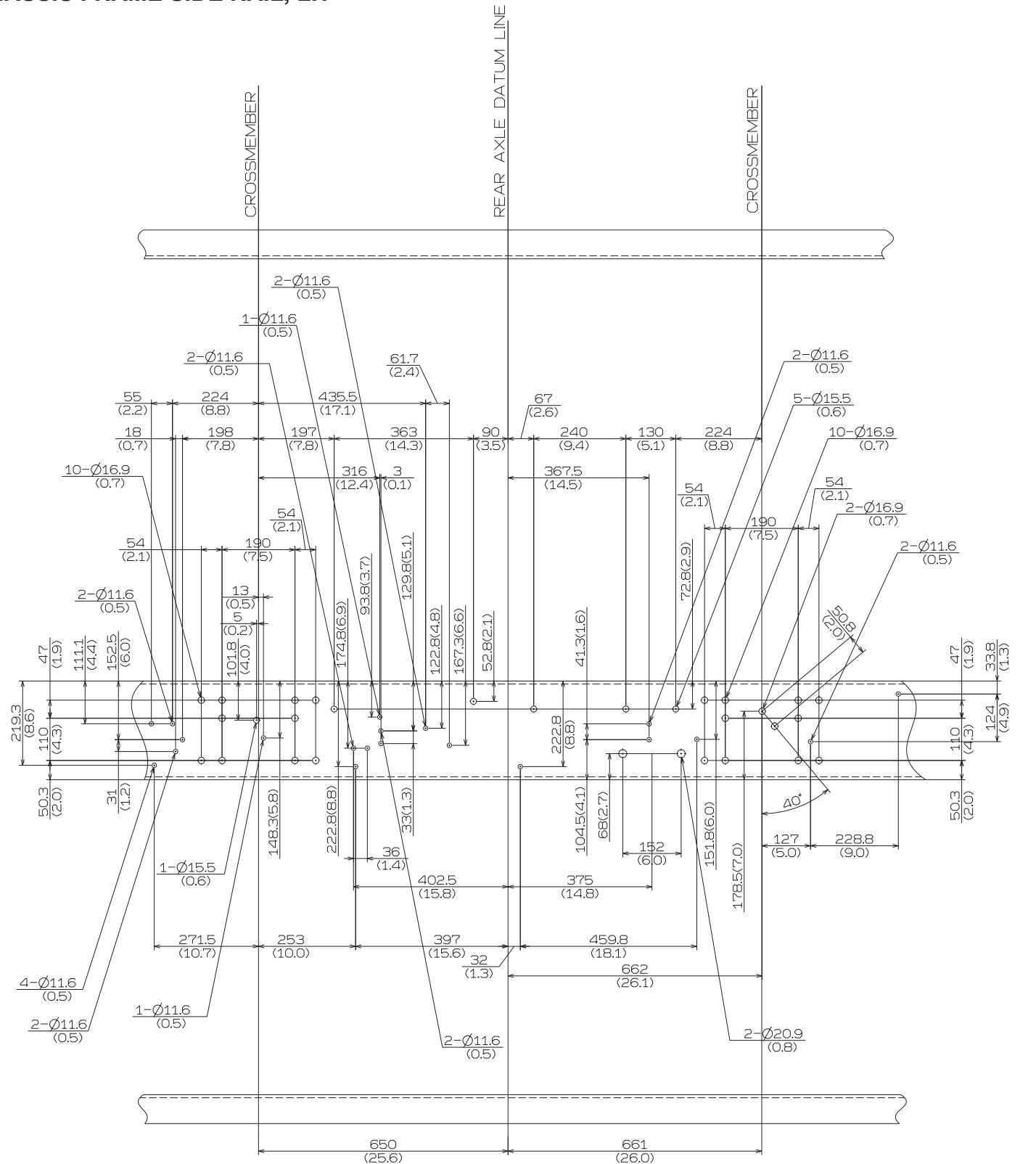
• CHASSIS FRAME SIDE RAIL, LH





## Unit : mm (in.)

- CHASSIS FRAME SIDE RAIL, LH

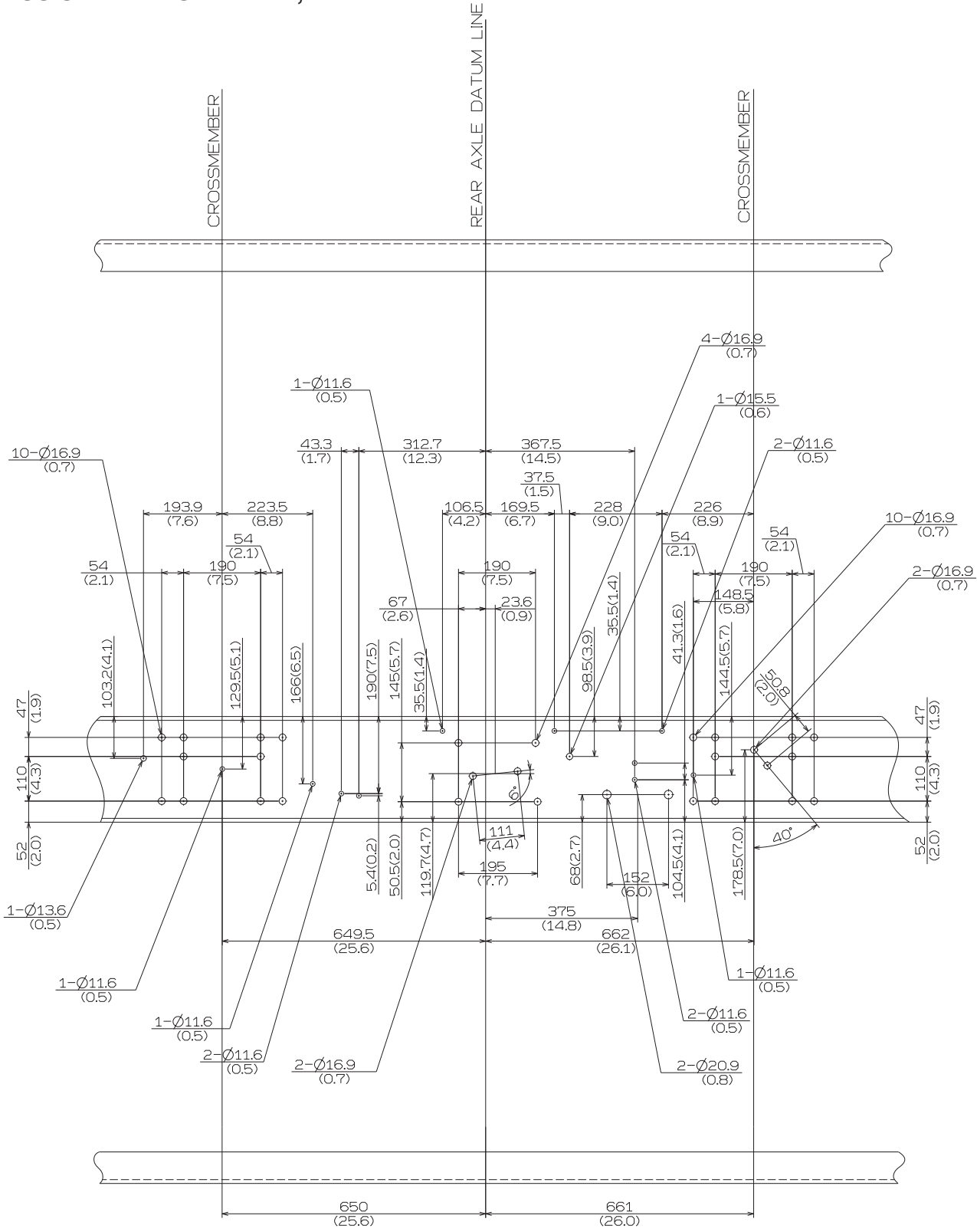




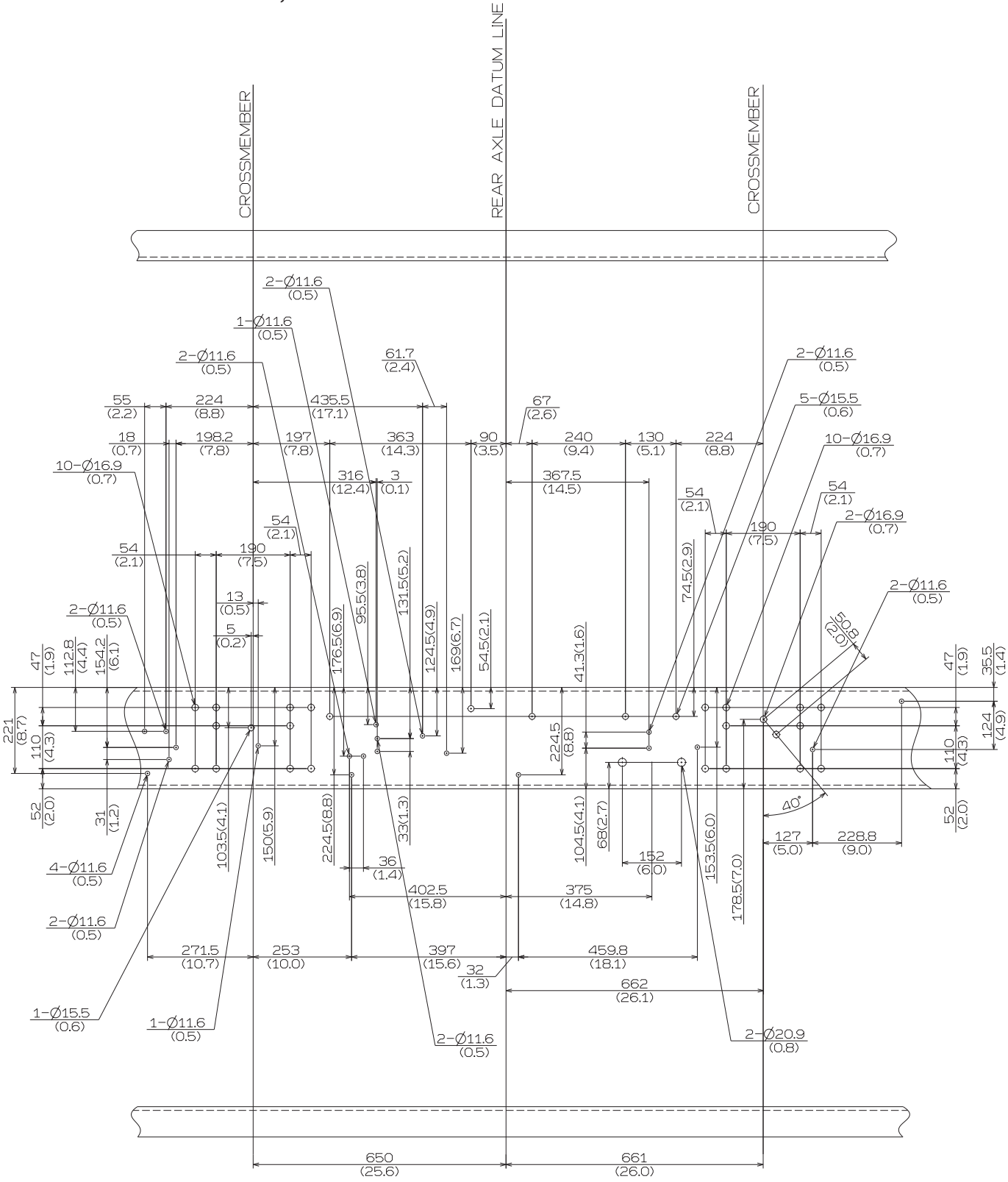
CHASSIS MODEL : NFC1(L7) FOR AIR SUS. WITH HYDRAULIC BRAKE SERIES  
{FRAME THICKNESS 9.5 mm (0.37 in.)}

Unit : mm (in.)

• CHASSIS FRAME SIDE RAIL, RH



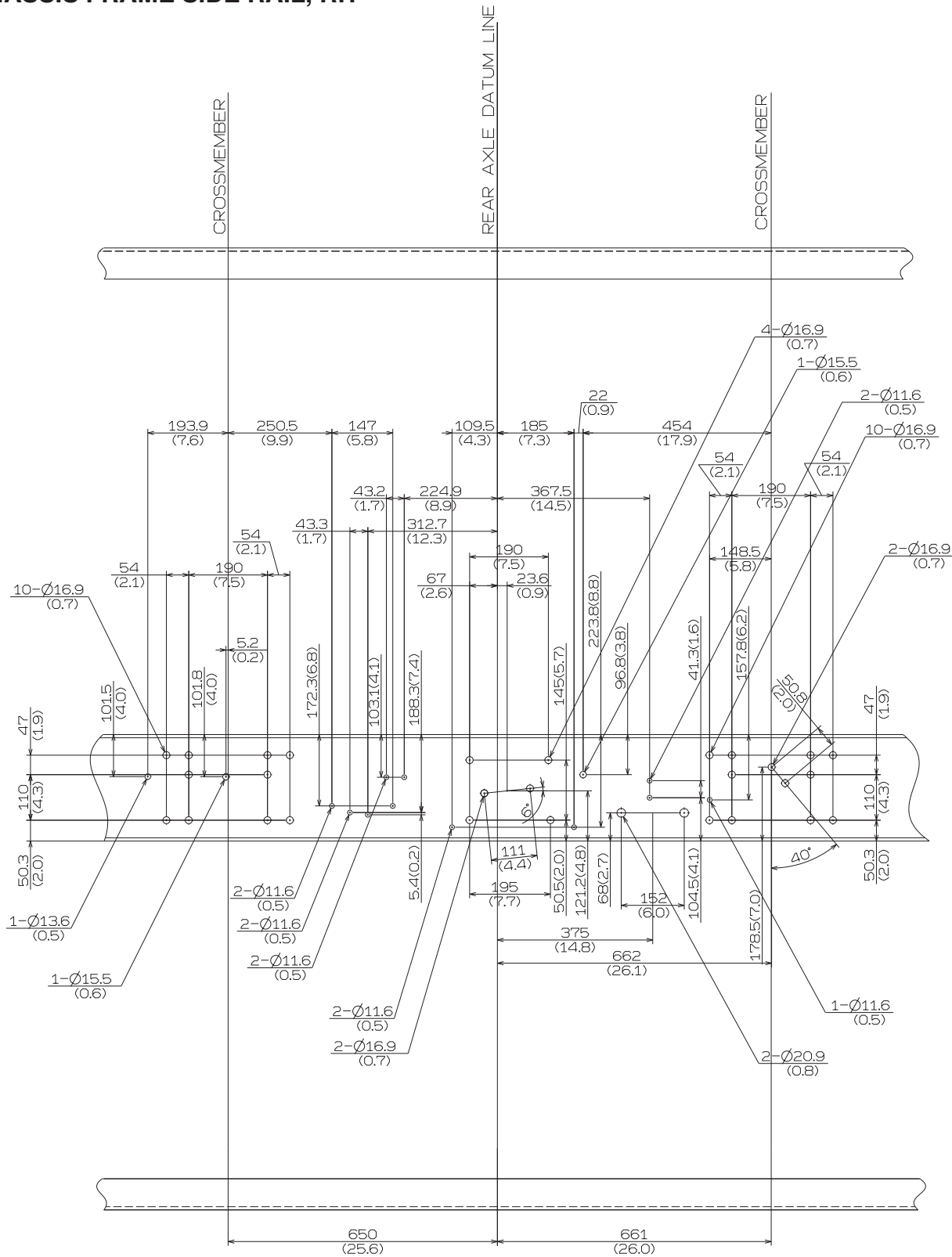
• CHASSIS FRAME SIDE RAIL, LH



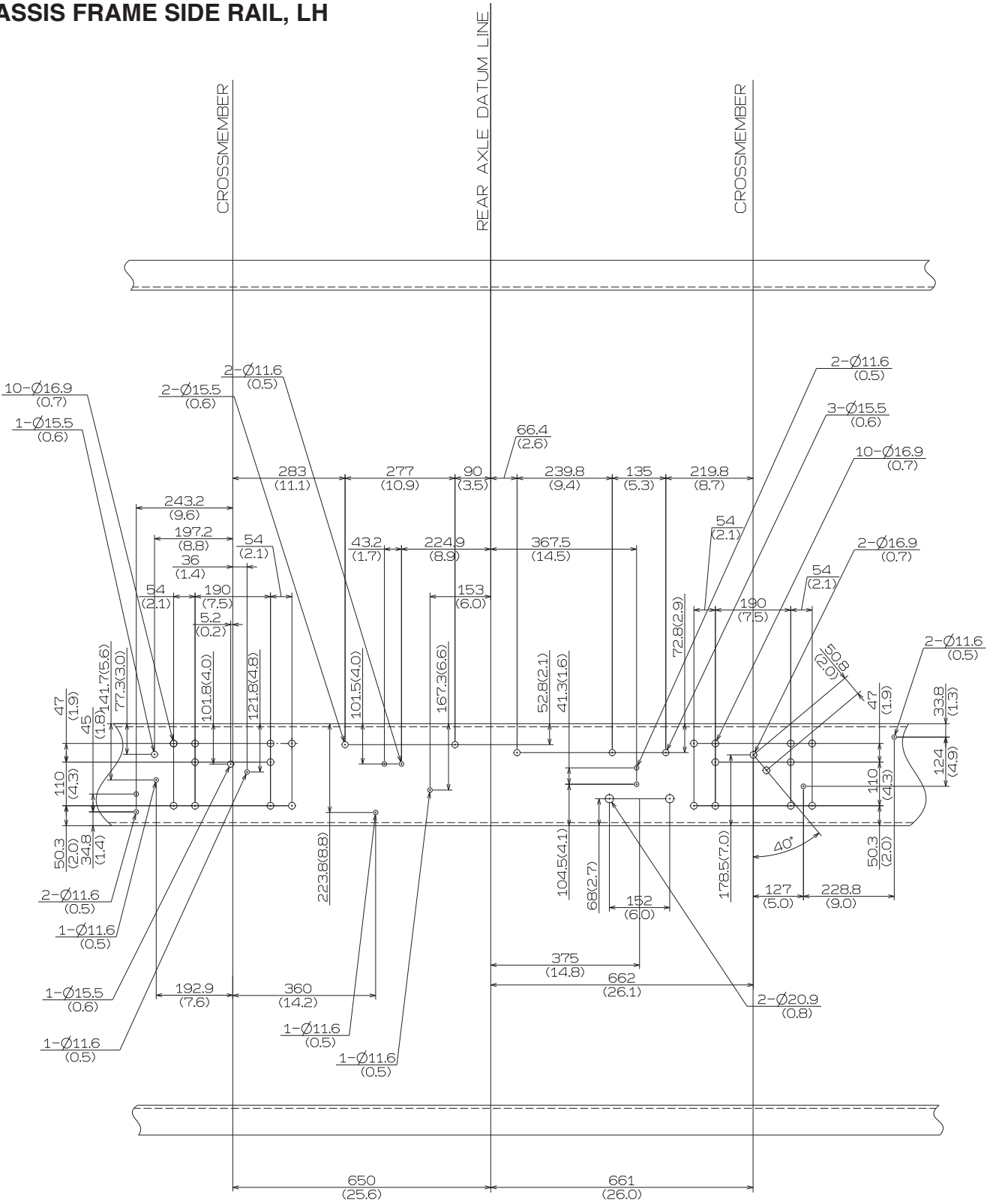
CHASSIS MODEL : NJC1(L6) FOR AIR SUS. WITH FULL AIR BRAKE SERIES  
{FRAME THICKNESS 7.8 mm (0.31 in.)}

Unit : mm (in.)

• CHASSIS FRAME SIDE RAIL, RH



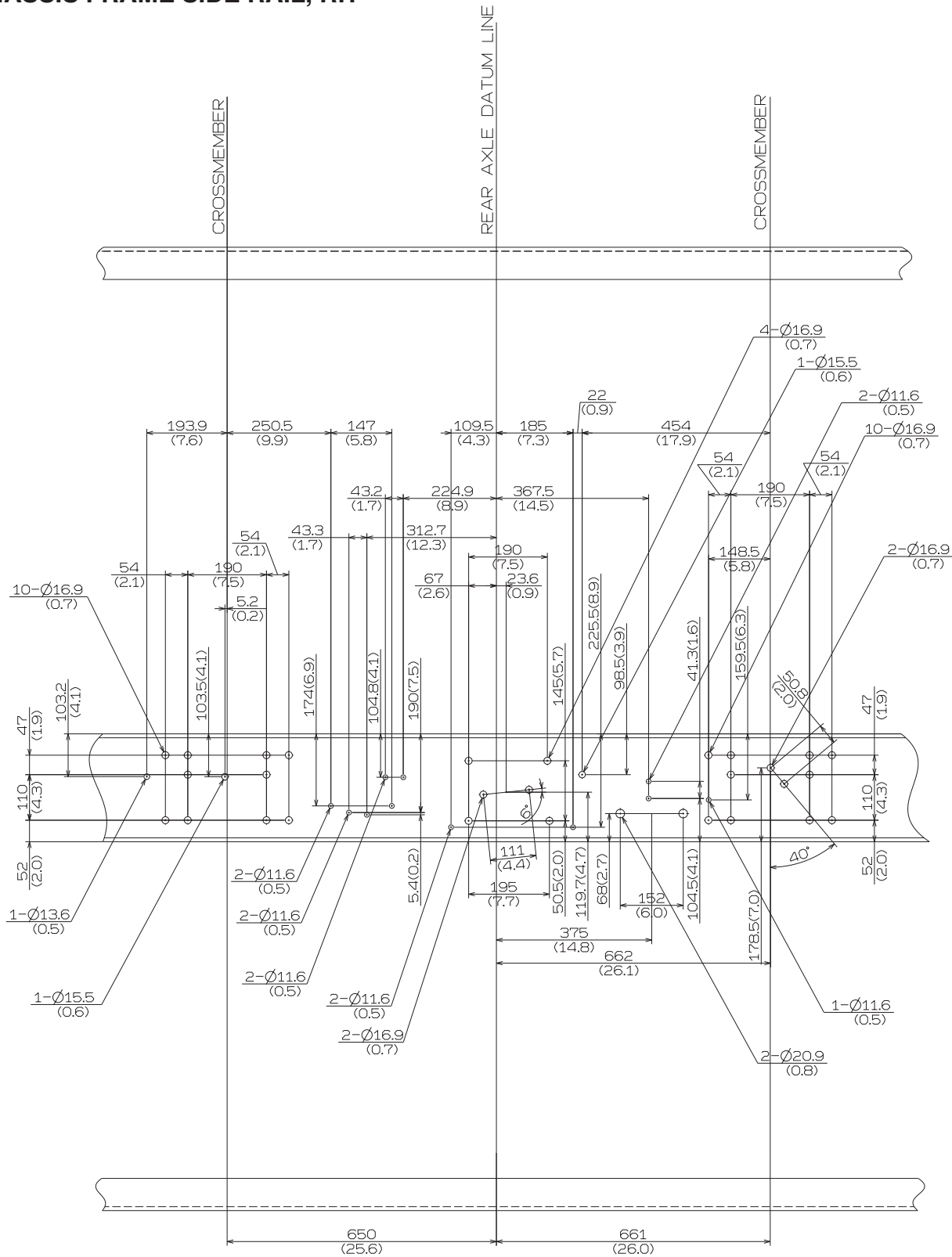
• CHASSIS FRAME SIDE RAIL, LH



CHASSIS MODEL : NVC1(L7) AND NHC1(L8) FOR AIR SUS. WITH FULL AIR BRAKE SERIES  
{FRAME THICKNESS 9.5 mm (0.37 in.)}

Unit : mm (in.)

• CHASSIS FRAME SIDE RAIL, RH



• CHASSIS FRAME SIDE RAIL, LH

